



AltonMill
ARTS CENTRE

WEDDINGS AT THE

Alton Mill Arts Centre



Welcome to Alton Mill – where timeless charm, artistic flair, and modern elegance come together to set the stage for your dream wedding. Nestled in a nationally acclaimed restored heritage building, our venue combines industrial-chic sophistication with the rustic charm of a peaceful village setting, complete with a cascading waterfall and a tranquil 3-acre Millpond. All of this is located just under an hour from downtown Toronto. At Alton Mill, your wedding isn't just an event – it's a one-of-a-kind experience steeped in beauty, history, and artistry.



CELEBRATE YOUR LOVE STORY

Your Experience

1

Timeless Elegance

Step into history at Alton Mill Arts Centre, a meticulously restored 19th-century mill radiating rustic charm and genuine character, offering an unparalleled romantic setting for your special day.

2

Exclusivity Redefined

Choose Alton Mill for your wedding, and relish in exclusive access to the property for your celebration. Your love story takes centre stage, with no other events to steal the spotlight.

3

Versatility Unleashed

Imagine a dreamy ceremony in the Annex Courtyard surrounded by nature, or an intimate indoor reception in the Millrace Room, adorned with rustic stone walls and expansive windows.

4

Seasons of Love

Get married in the season that mirrors your vision. From vibrant spring and summer affairs to cozy fall and winter celebrations, Alton Mill welcomes your dream wedding year-round.

5

Vendor Excellence

We offer a curated list of preferred vendors with stellar service records to help you assemble the perfect wedding team. At Alton Mill, your vision is our priority.



The Spaces

The Annex

4000 sq.ft

Embrace enchantment with our exquisite stone courtyard – a harmonious blend of intimacy and open-air allure. Enclosed yet connected to nature, this captivating space is ideal for ceremonies and dinners.

During peak season, this space features a stunning custom tent cover, market lights and radiant heating for your comfort.

Host 140 guests seated in this space.





The Millrace Room

1495 sq.ft.

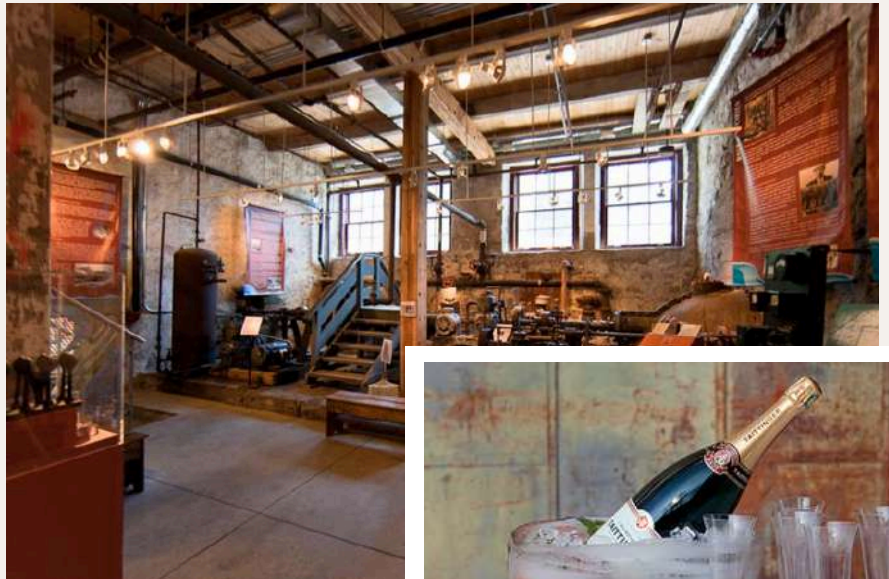
An intimate, space featuring stone-walls, wood beams and unique glass lenses in the floor that provide a view of the water running through the historic millrace. Located adjacent to the Turbine Room museum and Tuscan-style Waterfall Courtyard – this is our primary event space and home to an incredible party!

Host 120 guests seated in this space.

The Turbine Room

400 sq.ft

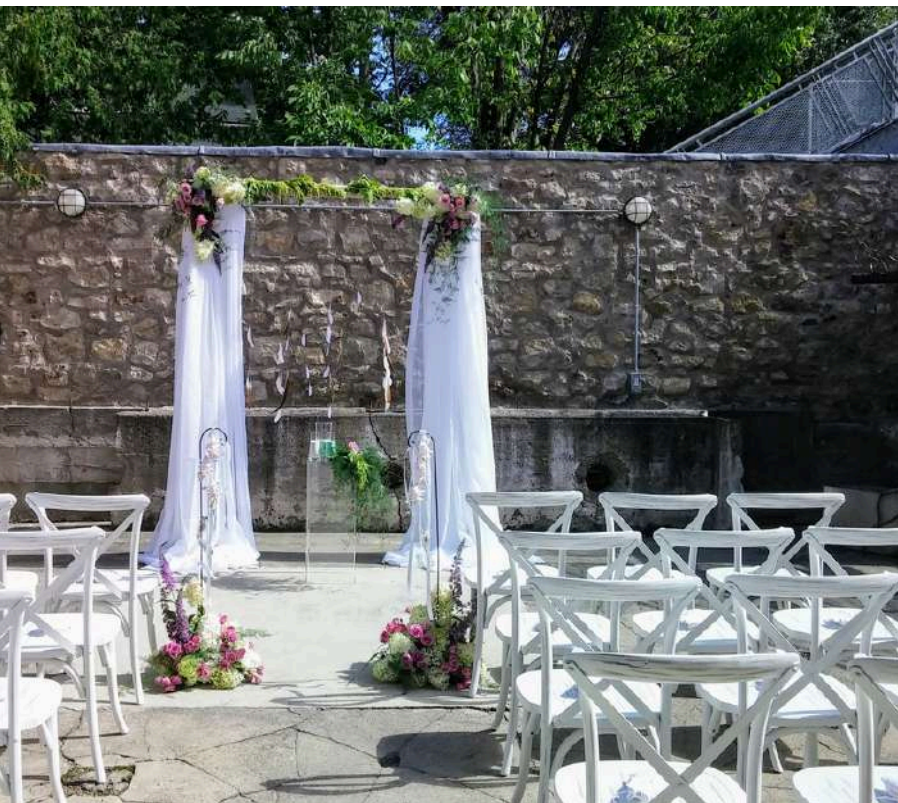
The Turbine Room is complete with the original turbine system, power take-off shafts and coal boiler. This incredible, historic space is often used to house a bar for your guests to enjoy.



Waterfall Courtyard

900 sq.ft.

A stunning, open-air stone courtyard adjacent to the Millrace Room is a beautiful space, suited to ceremonies, for guests to enjoy cocktails or perhaps escape the excitement of the celebration inside.



YOUR ALTON MILL WEDDING

Includes...

Exclusive use of our historic property for your ceremony & reception.

Use of a variety of spaces including the three popular stone-walled wedding spaces: the Annex Courtyard, Millrace Room and Waterfall Courtyard.

Photography permit for the property.

No corkage fees. So you can enjoy the cost savings of providing your own alcohol.

A pet-friendly environment.

Tenting over the Annex Courtyard during peak season, equipped with radiant heaters for comfort.

Edison style lights in both the Annex Courtyard and Waterfall Courtyard.

Access to our inventory of tables and chairs.

Additional permits and licensing (SOP and SOCAN/ReSound) are included.

Complimentary parking including, charging stations for electric vehicles

Our event coordinator to ensure everything runs smoothly.

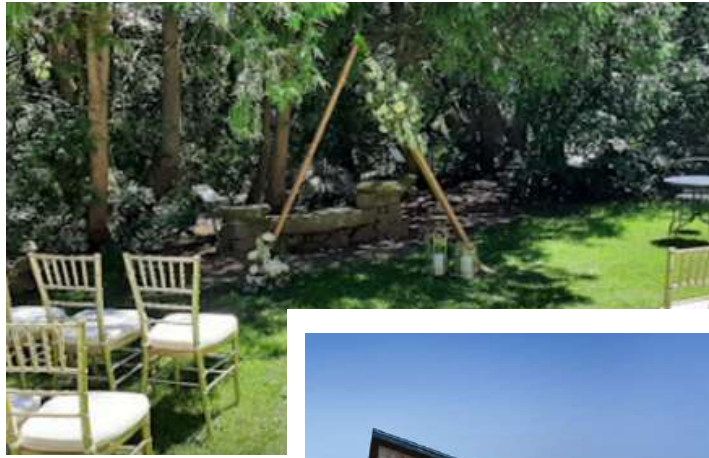


Peak Season

May 15 - October 31

\$8750 plus applicable tax
Up to 140 guests

We are pleased to offer
20% off on midweek
events.



Off-Peak Season

November 1 - May 14

\$6500 plus applicable tax
Up to 120 guests

We are pleased to offer
20% off on midweek
events.



Inventory Items

Available in limited quantities,
included



4' Rectangular Tables (standard width)
4' Rectangular Tables (narrow width)
6' Rectangular Tables
8' Rectangular Tables
48" Round Tables
54" Round Tables
60" Round Tables
24" Square Dining Height Tables
24" Square High Top Cruiser Tables
24" Round High Top Cruiser Tables
12' x 36" Harvest Table*
4' x 8' Modern-Industrial Table**
Indoor Banquet Chairs
Folding Patio Chairs (Black)
Off-White Molded Plastic Chairs***
Large Galvanized Trough on Wheels
Wheeled Coat Racks with Hangers
Wooden Podium
70" x 80" Projection Screen****
Assorted Easels and Chalkboards



*Remains in the Millrace Room
**Remains in the Riverside Room
***For dining in the Annex
****Fixed Ceiling Mount in the Millrace Room

Additional Items

Available for rent

Small PA System \$125

Cordless Mic System \$75

Birch Branch Arbour for Ceremonies \$400

Simple Cedar Arch for Ceremonies \$100

Arched Acrylic Table Numbers \$5 ea.



Schedule a Tour



Embark on the journey to your dream wedding with us!

We're thrilled to have the opportunity to guide you through the enchanting spaces of Alton Mill, igniting the spark for planning your extraordinary day.

Let's turn your wedding dreams into a beautiful reality – reach out today!

See you soon!

Alton Mill Arts Centre
1402 Queen St. West
Alton Village
Caledon, Ontario

519.941.9300

rent@altonmill.ca



AltonMill
ARTS CENTRE