



Hockey Hall of Fame  
**VENUE RENTALS**

# AFTER-HOURS

# VENUE RENTALS

Esso Great Hall  
Concourse Level  
Full Facility

# Table of CONTENTS

03

About the Venue

04

**RENTAL SPACE**  
Esso Great Hall

06

**RENTAL SPACE**  
Concourse Level

08

**RENTAL SPACE**  
Full Facility

10

Added  
Experience

11

Added  
Experience (cont'd)

12

Optional Add-Ons

13

Official Caterers &  
Suppliers

14

Important Dates and  
Reservation Policy

15

Facility Floor  
Plan





## ABOUT THE VENUE

Situated in the heart of downtown Toronto, the **Hockey Hall of Fame** offers a unique and vibrant venue that promises to elevate any event. Whether you're planning an elegant dinner, a lively cocktail reception, an award ceremony, or a corporate meeting, this iconic setting provides the perfect backdrop for creating memorable experiences. With its rich history and dynamic atmosphere, the Hockey Hall of Fame ensures your event will stand out in an unforgettable way.

### ADDRESS:

Hockey Hall of Fame  
Brookfield Place, 30 Yonge Street  
Toronto, Ontario, Canada M5E 1X8

### CONTACTS:

#### Aaron Stocco

Manager, Special Events and Hospitality  
416.933.8210 | [astocco@hhof.com](mailto:astocco@hhof.com)

#### Megan Simone

Co-ordinator, Special Events and Hospitality  
416.933.8236 | [msimone@hhof.com](mailto:msimone@hhof.com)





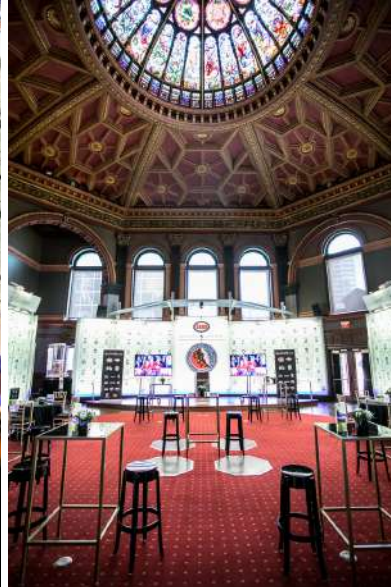
# ESSO GREAT HALL



Hockey Hall of Fame  
**VENUE RENTALS**

**CAPACITY:** Reception: 225 | Theatre: 200  
Banquet: 140 | Classroom: 112





## ESSO GREAT HALL

The Esso Great Hall, home to the iconic Stanley Cup, is an architectural masterpiece dating back to 1885, originally built for the Bank of Montreal. This stunning 19th-century venue provides an extraordinary atmosphere for special events. The versatile space can be arranged for sit-down dinners, stand-up receptions, or theatre-style seating, making it ideal for a wide range of functions. Featuring double glass walls that display portraits and biographies of our Honoured Members, as well as the major NHL awards and the Stanley Cup, the Esso Great Hall offers a prestigious setting for your next event.

**Rental Rate: \$3,500**

### RENTAL RATE:

Your rental of the Esso Great Hall includes exclusive access to this iconic space, as well as full setup and tear-down services. An on-site Event Supervisor will be provided, along with Guest Services and Building Services staff to ensure everything runs smoothly. For larger setups, a \$500.00 charge will apply to reposition the NHL Trophy cases to the room's exterior, allowing for greater flexibility in event design.

### SETUP START TIME:

Setup for after-hours receptions can begin as soon as the museum closes to the public. Depending on the day of the week and the time of year, the museum closes at either 5:00 p.m. or 6:00 p.m. Please note that setup cannot be accommodated during public hours.

### ENTRANCE:

The Esso Great Hall offers a private entrance conveniently located at the northwest corner of Yonge and Front Streets, ensuring exclusive and easy access for your guests.

### THE STANLEY CUP:

Your event includes private access to the legendary Stanley Cup, allowing guests an exclusive opportunity to explore its rich history and capture memorable photos alongside this iconic trophy.



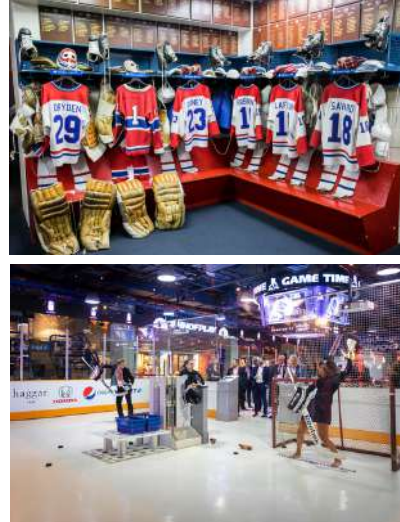
# CONCOURSE LEVEL



Hockey Hall of Fame  
**VENUE RENTALS**

**CAPACITY:** Reception: 775





## CONCOURSE LEVEL

The Concourse Level is a flexible space featuring various display areas, perfect for hosting a diverse range of events, including receptions for up to 775 guests. Guests can enjoy thrilling interactive hockey games, explore a replica Montreal Canadiens dressing room, experience the NHL Zone and World of Hockey, and take advantage of two theatres for presentations or screenings. The NHL Zone also provides an ideal setting for a DJ or band, enhancing the celebratory atmosphere of your event.

**Rental Rate: \$3,500**

### RENTAL RATE:

The rental rate includes exclusive access to the Concourse Level, along with complete setup and tear-down services. Your event will be supported by an on-site Event Supervisor, as well as dedicated Guest Services and Building Services staff to ensure everything runs seamlessly.

### SETUP START TIME:

Setup for after-hours receptions can begin as soon as the museum closes to the public. Depending on the day of the week and the time of year, the museum closes at either 5:00 p.m. or 6:00 p.m. Please note that setup cannot be accommodated during public hours.

### ENTRANCE:

The Concourse Level is accessible through the main entrance of the Hockey Hall of Fame, located one level below street level within the Brookfield Place complex.

### INTERACTIVE GAMES:

Our exciting interactive games are included at no additional cost when you rent the Concourse Level or Full Facility. This immersive experience features a 2,400-square-foot simulated rink where guests can test their shooting and goalie skills, sit behind a TSN SportsCentre news desk to practise reading from a teleprompter, commentate in our play-by-play booths, and much more—guaranteeing an unforgettable, hands-on experience for all.





# FULL FACILITY



Hockey Hall of Fame  
**VENUE RENTALS**

**CAPACITY:** Reception: 1,000





## FULL FACILITY

The Full Facility includes both the Esso Great Hall and Concourse Level, providing your guests with access to all the displays and features the Hockey Hall of Fame has to offer.

This expansive space can accommodate a wide variety of events, from elegant seated dinners and cocktail receptions to presentations and interactive food station experiences.

**Rental Rate: \$6,000**

### RENTAL RATE:

The rental rate includes exclusive access to the Full Facility, including private access to the Stanley Cup, along with full setup and tear-down services. An on-site Event Supervisor, along with Guest Services and Building Services staff, will ensure your event runs seamlessly. For larger setups in the Esso Great Hall, a \$500.00 charge applies to reposition the NHL Trophy cases to the room's exterior, providing greater flexibility for your event layout.

### SETUP START TIME:

Setup for after-hours receptions can begin as soon as the museum closes to the public. Depending on the day of the week and the time of year, the museum closes at either 5:00 p.m. or 6:00 p.m. Please note that setup cannot be accommodated during public hours.

### ENTRANCE:

When renting the Full Facility, you have the option to choose between two entrances: the Esso Great Hall entrance at the northwest corner of Yonge and Front Streets, or the Concourse Level entrance on the lower level of Brookfield Place.

### INTERACTIVE GAMES:

Our exciting interactive games are included at no additional cost when you rent the Concourse Level or Full Facility. This immersive experience features a 2,400-square-foot simulated rink where guests can test their shooting and goalie skills, sit behind a TSN SportsCentre news desk to practise reading from a teleprompter, commentate in our play-by-play booths, and much more—guaranteeing an unforgettable, hands-on experience for all.



# ADDED EXPERIENCE



Step into a world of unforgettable memories at the Hockey Hall of Fame, where the Event Imaging team will elevate your experience to the next level.

## MVP Package

Digital Sharing  
(Email, Text, QR Code)

## Champion Package

Digital Sharing and Instant Printing

## All-Star Package

Instant Printing (4x6, 5x7, 8x10)

## Be A Pro Package

Customized Sports Cards (2.5 X 3.5)

\*All packages include a digital image gallery

### Additional Options:

Candid Photography | Video Highlight Reel  
Branded Photo | Folders and Frames

For more information please visit [Event Imaging](https://www.eventimaging.ca)





## ADDED EXPERIENCE (cont'd)



Mustang is dedicated to innovation across a wide range of products for your event and meeting needs. From stationery and drinkware to miniature Stanley Cups and collectibles, we offer something for every occasion. Our premium collectible pucks set a new industry standard, reflecting our commitment to both speed and quality. Explore our full product line at [Mustang Products](#).



### SOUVENIRS:

Clients receive a 20% discount on all Spirit of Hockey merchandise leading up to their event. For larger orders, please provide ample notice to ensure availability. This discount does not extend to event guests. Explore our merchandise at [Spirit of Hockey](#).

### PRIVATE RETAIL EXPERIENCE:

The Spirit of Hockey store offers HHOF, NHL, International Hockey, and other licensed merchandise. For Concourse Level and Full Facility rentals, we can keep the store open for 3 hours exclusively for your event with a minimum \$1,000.00 spend before taxes.

### CUSTOMISED PUCKS:

Custom hockey pucks are a perfect guest takeaway. One side features the HHOF logo, and the other displays your custom logo. Submit designs in Adobe Illustrator with pantone colours 6 weeks prior to avoid rush fees. Mock-ups are provided before production. The cost is \$6.00 per puck with a 100-puck minimum.

### SPECIAL APPEARANCES:

We can assist in securing Honoured Members, NHL Alumni, or Hockey Personalities for your event. Share your preferences, and we'll check their availability and honorarium.





## OPTIONAL ADD-ONS

RENTALS	RATE	NOTE
Coat Check - per person	\$1.25	Quantity ordered will be billed to client directly.
Registration Table and Linen	\$40.00	6" or 8" available with black or white linen.
Easel	\$32.00	Aluminum
Bar Stool (Padded with Backing)	\$28.00	Padding with Backing - White or Black Avail.
Riser/Platform	\$125.00	Size: (4' W x 8' L) Available Heights: 8", 16", 32"

AUDIO/VISUALS	RATE	NOTE
Audio/Visual Technician (4 hour minimum)	\$60/hr.	<b>*A technician is required if there are any A/V requests*</b>
Music Licensing Fee (Background Music)	\$46.31-\$281.21	Rate is dependant on space rented.
Podium/Microphone	\$250.00	Gooseneck microphone affixed to clear acrylic podium.
Additional Microphone (4 Available)	\$100 each	Handheld or lavalier microphones available.
65" Monitor (2 Available)	\$250 each	Monitor affixed to rolling monitor stand.
Media Pool Feed	\$100.00	
Audio Feed to Full Facility	\$250.00	Required for presentations or speeches.
Audio/Video Feed (Additional Technician Required)	\$500.00	Required for presentations or speeches.
CCR Solution (External Supplier May be Required)	TBD	If requests exceed HHOF capabilities, our external supplier will be contacted.

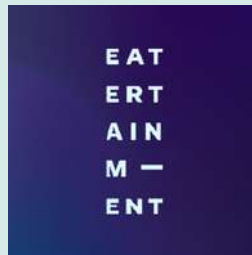
MISCELLANEOUS	RATE	NOTE
Esso Great Hall Trophy Movement	\$500.00	Required for plated dinners or larger event formats.
Extended Rental Hours (11:00 p.m. to 1:00 a.m.)	\$350.00	
On-Site Security (Per Guard)	\$46.00/hr.	A minimum of 2 Guards required.
Brookfield Place Parking Vouchers	Please inquire	Please call directly at (416) 777-6468.
Administration Fee	TBD	May apply to credit card payments made after initial deposit.



# OFFICIAL CATERERS AND SUPPLIERS

## EXCLUSIVE CATERERS:

Our three Exclusive Caterers will work closely with you to customise the ideal menu and event details. They manage all rentals (Element Event Solutions), waitstaff and bartenders (David Lovell Events), alcohol, and Liquor License arrangements. They also provide services for florals, décor, DJs, and entertainment. Please note that outside caterers are not allowed.



## EXCLUSIVE RENTAL SUPPLIER:



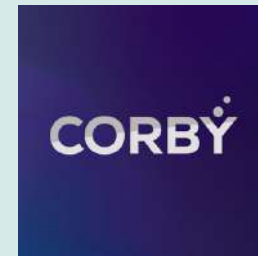
## EXCLUSIVE AUDIO/VISUAL PROVIDER:



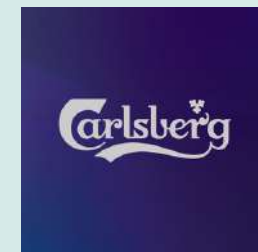
## EXCLUSIVE STAFFING SUPPLIER:



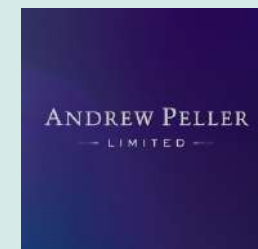
## EXCLUSIVE SPIRITS SUPPLIER:



## PREFERRED BEER SUPPLIER:



## PREFERRED WINE SUPPLIER:





# IMPORTANT DATES AND RESERVATION POLICY

## IMPORTANT DATES:



## RESERVATION POLICY :

Reservations for private rentals of Hockey Hall of Fame (HHOF) facilities are subject to space availability on a “first come, first serve basis” (as defined below), daytime and seasonal access restrictions and all relevant terms and conditions set out in the Special Event Occupancy Agreement (SEOA) as determined by HHOF from time to time in its sole and absolute discretion.

“First come, first serve basis” means the earliest date on which a client is the first to confirm a specific event date (or dates) by paying the applicable rental fee deposit and providing a signed copy of the SEOA to HHOF (together, the “Confirmation Requirements”), it being understood that:

- **(i)** if HHOF has confirmed in writing to HOLD a particular event date (or dates) for a prospective client and another party subsequently commits to confirm such event date (or dates), then upon HHOF's written or verbal notice such prospective client will be given three (3) business days to satisfy the Confirmation Requirements failing which the HOLD for such prospective client will no longer apply,
- **(ii)** such written or verbal notice from HHOF will be given only to the extent that such prospective client has maintained the HOLD by providing written notice to HHOF on at least a monthly basis (or as otherwise agreed by HHOF by written confirmation) commencing on the date that the HOLD was initiated,
- **(iii)** such HOLD will be forfeited in the event of any failure by such prospective client to respond to HHOF's written or verbal notice or if HHOF is unable to contact such prospective client for any reason whatsoever, and
- **(iv)** the existence of any such HOLD shall not constitute a contractual commitment or create any legally binding obligations between HHOF and such prospective client.



# FULL FACILITY FLOOR PLAN



## MUSEUM SPACES/EXHIBITIONS :

- |                            |                                 |   |                                    |
|----------------------------|---------------------------------|---|------------------------------------|
| 1. Entrance Foyer Displays | 5. TSN Theatre                  | 9. Upper Deck Collectors' Corner        | 13. Esso Great Hall & NHL Trophies |
| 2. Hyundai NHL Zone        | 6. Vintage Hockey Hub – Zamboni | 10. The Mask presented by Mustang Pucks | 14. Spirit of Hockey Retail Store  |
| 3. Canadiens Dressing Room | 7. NHLPA Game Time              | 11. Tim Hortons Theatre                 | 15. Exterior Sculptures            |
| 4. Stanley Cup Dynasties   | 8. TSN/RDS Broadcast Zone       | 12. National Bank World of Hockey       | 16. Founders & Vault Room          |