



MEETING AND EVENT SPACES

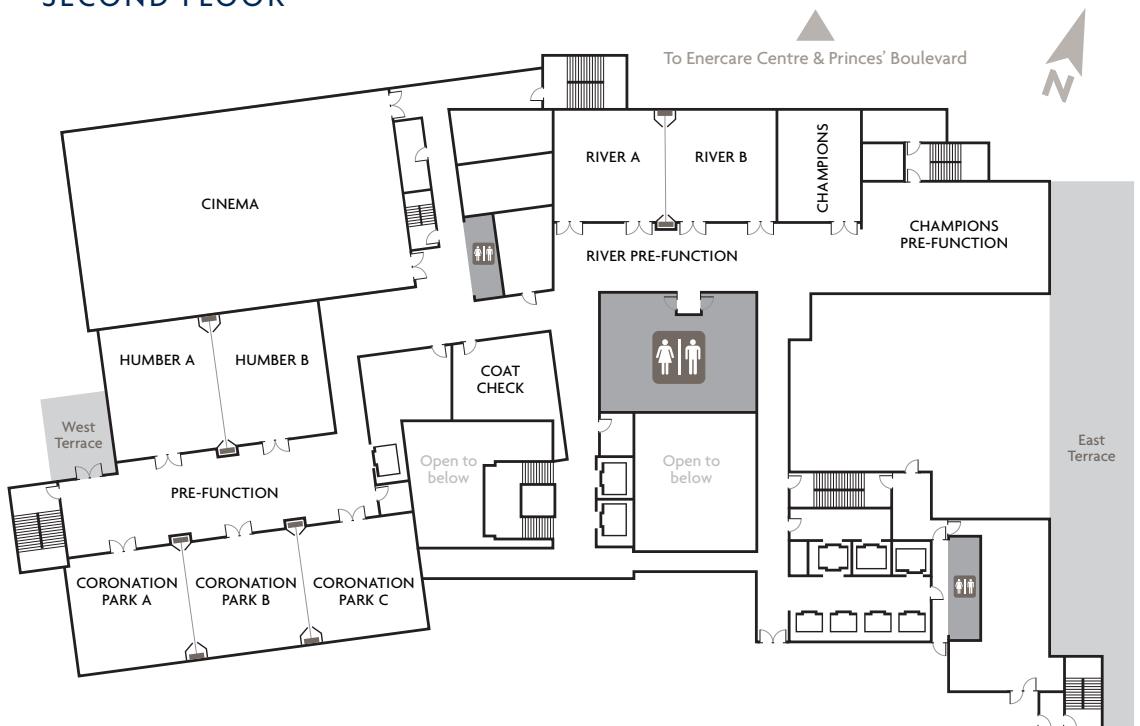
IT'S ABOUT YOU.
IT'S ABOUT THE VIEW.



THIRD FLOOR



SECOND FLOOR



For Bookings
and information
please contact Hotel X
Toronto at:

T. 1.855.647.9300

E. Stay@HotelXToronto.com

HotelXToronto.com

HOTEL X TORONTO MEETING & EVENT SPACES

	Area	Length	Width	Height	Classroom	Banquet	Reception	Theatre	Hollow Square	U Shape	Crescent Rounds	Exhibits 10x10
GROUND LEVEL												
Cinema	4,153 sq.ft.	-	-	26'2"	-	-	-	250	-	-	-	-
Screening Room	1,550 sq.ft.	-	-	11'3"	-	-	-	56	-	-	-	-
New Fort Hall	2,876 sq.ft.	47'5"	65'4"	-	84	150	250	192	60	39	105	-
Kandy Gallery	2,200 sq.ft.	52'	17'	11'4"	-	-	200	-	-	-	-	-
Arts & Entertainment Pre-Function	1,500 sq.ft.	108'6"	41'6"	11'4"	-	-	200	-	-	-	-	-
Lobby Bar	1,779 sq.ft.	56'6"	31'6"	10'11"	-	-	87	-	-	-	-	-
SECOND FLOOR												
Champion's Boardroom	582 sq.ft.	27'11"	21'	12'6"	-	-	-	-	16	-	-	-
Champion's Boardroom Pre-Function	1,359 sq.ft.	28'2"	48'2"	12'6"	30	48	100	-	16	20	-	30
Riverdale Park	1,600 sq.ft.	28'8"	55'8"	12'6"	42	80	150	120	42	33	48	10
Riverdale Park A	800 sq.ft.	28'8"	27'11"	12'6"	21	40	85	50	30	27	24	4
Riverdale Park B	800 sq.ft.	28'8"	27'11"	12'6"	21	40	85	50	30	27	-	4
Riverdale Park Pre-Function	1,438 sq.ft.	16'	79'2"	12'6"	-	-	160	-	-	-	-	-
Humber Park	1,930 sq.ft.	34'8"	57'3"	12'6"	96	120	200	150	54	39	72	15
Humber Park A	965 sq.ft.	34'8"	28'	12'6"	48	60	100	90	42	24	36	6
Humber Park B	965 sq.ft.	34'8"	29'3"	12'6"	48	60	100	90	42	24	36	6
Coronation Park	2,609 sq.ft.	30'	87'41"	12'6"	120	160	275	288	96	45	84	18
Coronation Park A	877 sq.ft.	30'	29'3"	12'6"	48	40	90	75	42	21	24	4
Coronation Park B	871 sq.ft.	30'2"	29'4"	12'6"	48	40	90	75	42	21	24	4
Coronation Park C	881 sq.ft.	30'	28'10"	12'6"	48	40	90	75	42	21	24	4
Coronation Park A-B	1,744 sq.ft.	30'	57'2"	12'6"	100	140	180	150	84	50	84	8
Coronation Park B-C	1,752 sq.ft.	30'	57'	12'6"	100	140	180	150	84	50	84	8
Coronation Park Pre-Function	1,421 sq.ft.	18'	80'4"	12'6"	-	-	155	-	-	-	-	-
The Terrace at Maxx's Kitchen	2,332 sq.ft.	120'9"	20'	-	-	213	-	-	-	-	-	-
THIRD FLOOR												
Victory Ballroom	6,346 sq.ft.	57'1"	104'6"	14'10"	324	516	660	560	132	69	216	50
Victory Ballroom North	3,172 sq.ft.	57'1"	52'3"	14'10"	162	220	330	280	66	35	198	15
Victory Ballroom South	3,172 sq.ft.	57'1"	52'3"	14'10"	162	220	330	280	66	35	198	15
Victory Ballroom Terrace	1,176 sq.ft.	71'8"	16'5"	-	-	-	60	-	-	-	-	-
Victory Ballroom Pre-Function	3,682 sq.ft.	58'	30'	12'6"	-	-	400	-	-	-	-	10
Marina Terrace	3,477 sq.ft.	64'8"	53'10"	-	-	-	350	-	-	-	-	-
Princes' Gates Ballroom	3,578 sq.ft.	42'8"	83'10"	12'6"	144	210	375	336	102	66	147	22
Princes' Gates Ballroom East	1,789 sq.ft.	42'8"	41'11"	12'6"	122	105	177	147	51	74	90	12
Princes' Gates Ballroom West	1,789 sq.ft.	42'8"	41'11"	12'6"	-	105	177	147	51	74	90	12
Princes' Gates Pre-Function	2,817 sq.ft.	51'5"	54'9"	10'10"	-	130	300	-	-	-	-	18
East Terrace	995 sq.ft.	49'9"	20'	-	-	-	60	-	-	-	-	-
The Bow Tie	720 sq.ft.	28'3"	27'2"	10'10"	-	-	30	-	-	-	-	-
The Pearl	840 sq.ft.	49'10"	14'11"	10'10"	-	-	40	-	-	-	-	-
Trillium Park Studio	750 sq.ft.	20'7"	36'2"	10'10"	-	-	75	-	30	22	-	-
FOURTH FLOOR												
High Park Terrace	6,966 sq.ft.	104'4"	64'6"	-	-	180	567	500	-	-	-	-
SPECIALTY SUITES												
Bi-Level Penthouse Suite 25th/26th Floor	1,421 sq.ft.	46'22"	20'11"	19'11"	-	-	70	-	-	-	-	-
Presidential Suite 26th Floor	1,352 sq.ft.	46'2"	22'6"	8'3"	-	-	60	-	-	-	-	-
FALCON SKYBAR												
The Nest 27th Floor	1,450 sq.ft.	48'2"	30'	8'10"	-	-	140	-	-	-	-	-
The Nest Terrace	620 sq.ft.	77'4"	8'	-	-	-	39	-	-	-	-	-
The Nook 27th Floor	330 sq.ft.	13'3"	24'2"	9'3"	-	12	20	-	-	-	-	-
The View 28th Floor	1,433 sq.ft.	28'8"	55'8"	14'10"	54	100	150	150	54	36	60	6
The View Pre-Function	410 sq.ft.	31'	12'10"	10'11"	-	-	30	-	-	-	-	-
The View Terrace	290 sq.ft.	22'2"	13'	-	-	-	15	-	-	-	-	-
The Perch 27th Floor	1,313 sq.ft.	42'6"	30'10"	9'11"	-	-	95	-	-	-	-	-
The Perch Terrace Pool Deck	774 sq.ft.	30'7"	25'4"	-	-	-	51	-	-	-	-	-
The Peak 29th Floor	1,455 sq.ft.	29'3"	32'7"	-	-	-	178	-	-	-	-	-
The Lawn 29th Floor	2,360 sq.ft.	63'	31'2"	-	-	-	178	150	-	-	-	-
STANLEY BARRACK'S GARDENS												
Indoor Event Space Suitable for 25-50 pax	Coming Summer 2019											
North Plaza Parade Gardens, Facing the Lake	60,000 sq.ft.						5,000					
West Patio	10,000 sq.ft.						350					
South Plaza Facing Princes' Blvd	25,000 sq.ft.						2500					
BEANFIELD CENTRE & ENERCARE CENTRE												
Hotel X Toronto is located on Exhibition Place, adjacent to the Beanfield Centre and directly across the street from the Enercare Centre. Plans to connect Hotel X Toronto and the Beanfield Centre via a skybridge will commence in 2020, creating a seamless transition between properties for event attendees and hotel guests. The Beanfield Centre, boasting over 160,000 sq. ft. of event space is connected via an underground tunnel to the Enercare Centre, which is home to over 1 million sq. ft. of flexible convention space.												

*All room layouts are subject to change based on the function requirements. Each event is customized based on client needs.