



**MERIDIAN  
ARTS CENTRE**

## **Corporate Rentals Package**

•  
**T0 Live Rentals**

**Scott North – Director, Corporate & Private Events**  
(416) 368-6161 ext. 7139, [Scott.North@TOLive.com](mailto:Scott.North@TOLive.com)

# Our Past Clients



Google

ELEVATE

 Pinterest

 Microsoft

 RGD

 Bell Media

 YouTube

 TORONTO

 ROGERS

 ONTARIO  
CREATES

 TORONTO STAR

 TikTok

 CANADA POST  
POSTES CANADA



 SickKids®

 ACADEMY  
OF CANADIAN CINEMA & TELEVISION

 ACADÉMIE  
CANADIENNE DU CINÉMA ET DE LA TÉLÉVISION

 CBC

 CANADA'S  
WALK OF FAME

 KPMG

 Meridian

 FRANKLIN  
TEMPLETON

 Special  
Olympics

 UFC



# Table of Contents

4. [Meridian Arts Centre](#)
5. [George Weston Recital Hall](#)
6. [Lyric Theatre](#)
7. [Studio Theatre](#)
8. [Greenwin Theatre](#)
9. [Upper and Lower Galleries](#)
10. [Main Lobby](#)
11. [Ancillary Spaces](#)
12. [In-House Catering](#)
13. [Digital Signage](#)
14. [Preferred Rental Suppliers](#)
15. [Frequently Asked Questions](#)
16. [Rental Rates and Capacity](#)
17. [Contact Us](#)



*Photo: Jonathan Castellino*



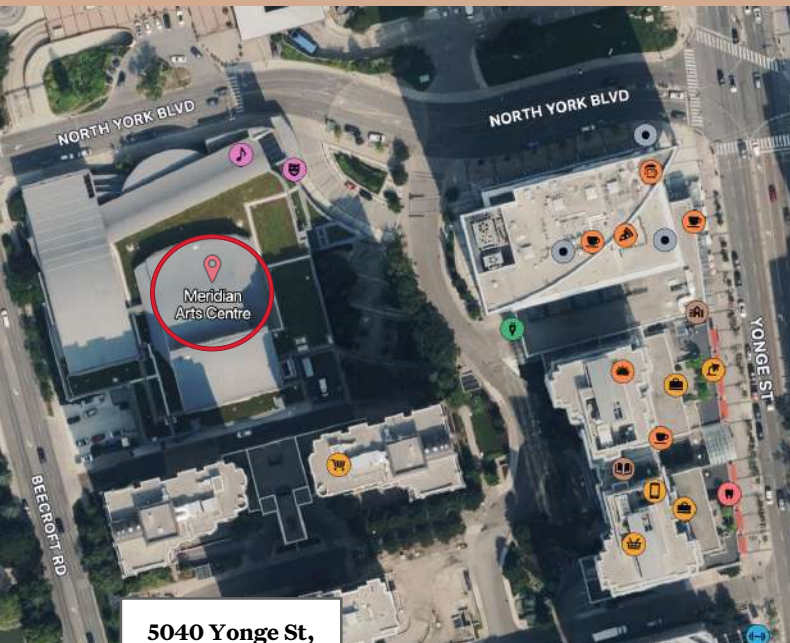
# Meridian Arts Centre

Since opening in 1993, the Meridian Arts Centre has established itself as a prominent cultural venue and landmark, with a rich history of celebrated performances and productions.

The venue houses four unique theatres, ranging in size and style. In addition to being an ideal space for concerts, theatrical productions, and stage plays, these versatile spaces are also suitable for a variety of private functions and corporate events.

Located in the heart of North York, the Meridian Arts Centre is easily accessible by public transit with two TTC stations just minutes away, and by car via nearby major highways. Ample street and underground parking is also available.

[Take a virtual tour of the Meridian Arts Centre!](#)





# GEORGE WESTON RECITAL HALL

As a concert theatre, the George Weston Recital Hall is an acoustically ideal rectangular room, perfect for presentations and performances. Featuring an open stage, as well as retractable curtains and panels, the George Weston Recital Hall provides optimal listening conditions.

Including the choir loft wrapping behind the stage, the Recital Hall can seat a total of 998 people, making it the largest space within Meridian Arts Centre.

**Download:**

GWRH [Tech Specs](#)

GWRH [Seating Plans](#)

GWRH [Floor Plans](#)



# LYRIC THEATRE

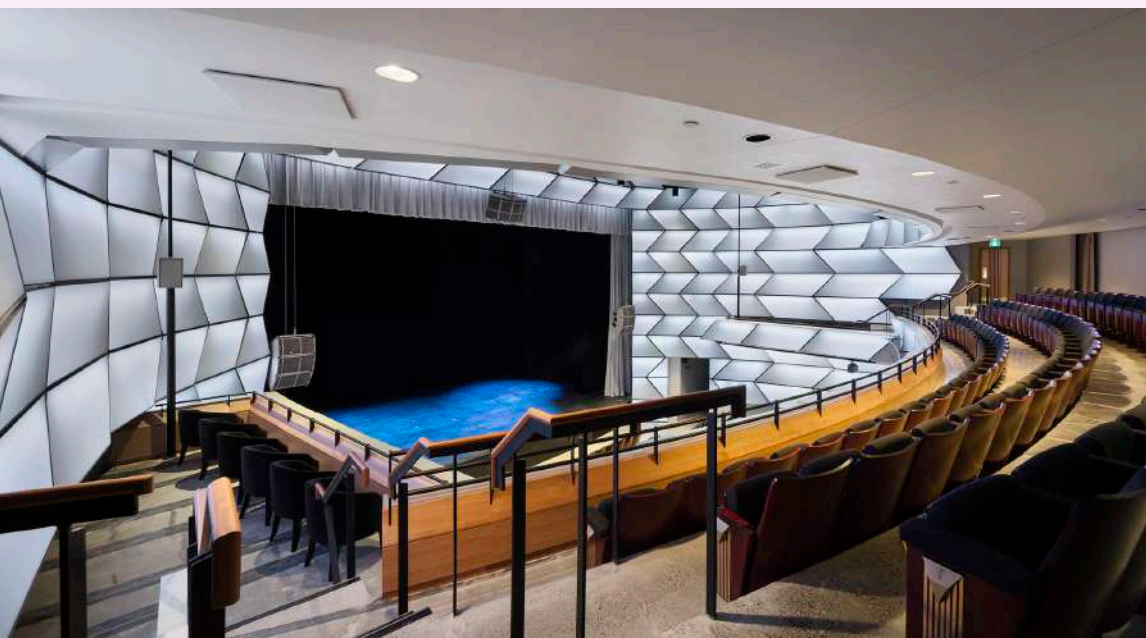
With 497 seats on the orchestra level and 94 on the balcony, the multifaceted Lyric Theatre seats a total of 561 guests.

The contemporary Lyric Theatre features translucent acoustic panels wrapping the theatre walls. These panels are equipped with backlit, customizable, LED lights, offering a unique and exciting space for creative productions and events.

Access to a secluded, private bar is available on the balcony level.

**Download:**

Lyric Theatre [Tech Specs](#)  
Lyric Theatre [Seating Plans](#)  
Lyric Theatre [Floor Plans](#)





# STUDIO THEATRE

Featuring a cyclorama screen, the black box Studio Theatre is a versatile space, great for small scale performances or presentations.

178 retractable seats and wrap-around loges allow for a variety of configurations.

The theatre also features track lighting, helping to brighten the space. Steel accents also give the theatre a modern appearance.

**Download:**

Studio Theatre [Tech Specs](#)  
Studio Theatre [Seating Plans](#)  
Studio Theatre [Floor Plans](#)





# GREENWIN THEATRE

The Greenwin Theatre, the secondary black box theatre at Meridian Arts Centre, consists of recessed front row seating before a rectangular stage. The theatre also features a cutting-edge tension grid system and a cyclorama screen.

Mid-sized productions and events are ideal for this space, with a capacity of 296 guests.

**Download:**

Greenwin Theatre [Tech Specs](#)  
Greenwin Theatre [Seating Plans](#)  
Greenwin Theatre [Floor Plans](#)





# UPPER AND LOWER GALLERIES

Meridian Arts Centre features two large, open concept galleries, brightly lit with natural lighting, and connected with a private stairwell.

Both Upper and Lower Galleries are extremely versatile, making them the perfect space to accommodate a variety of smaller gatherings.

Host workshops, presentations and networking events, or use the area as a breakout space for your guests.

**Download:**

Upper and Lower Gallery

[Floor Plans](#)



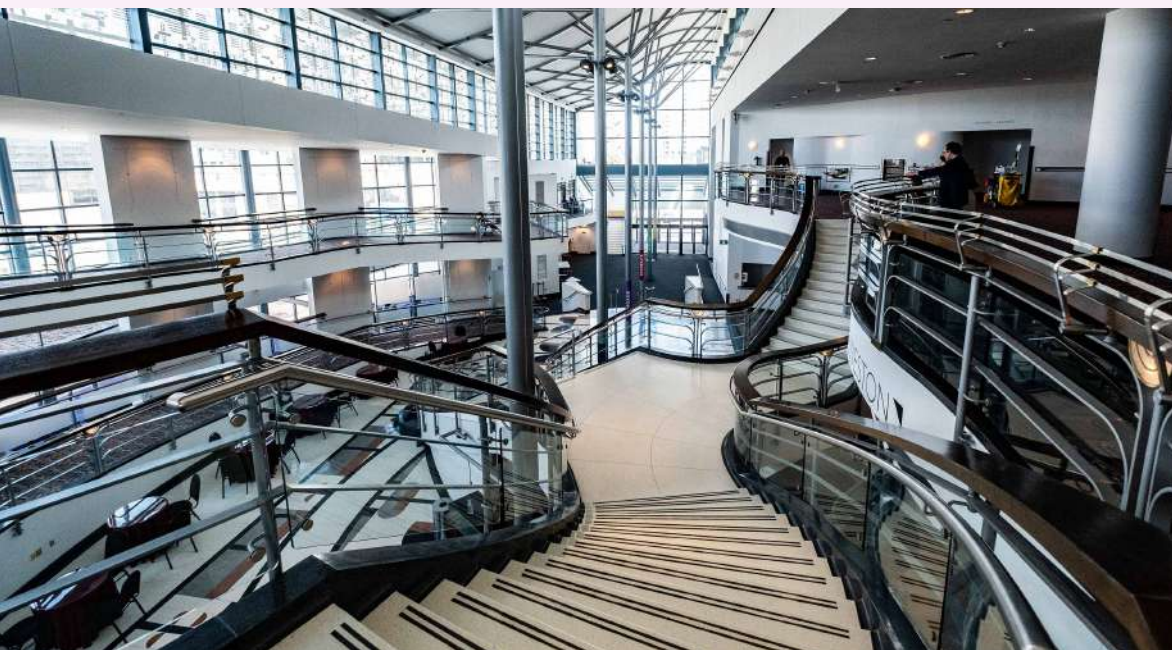
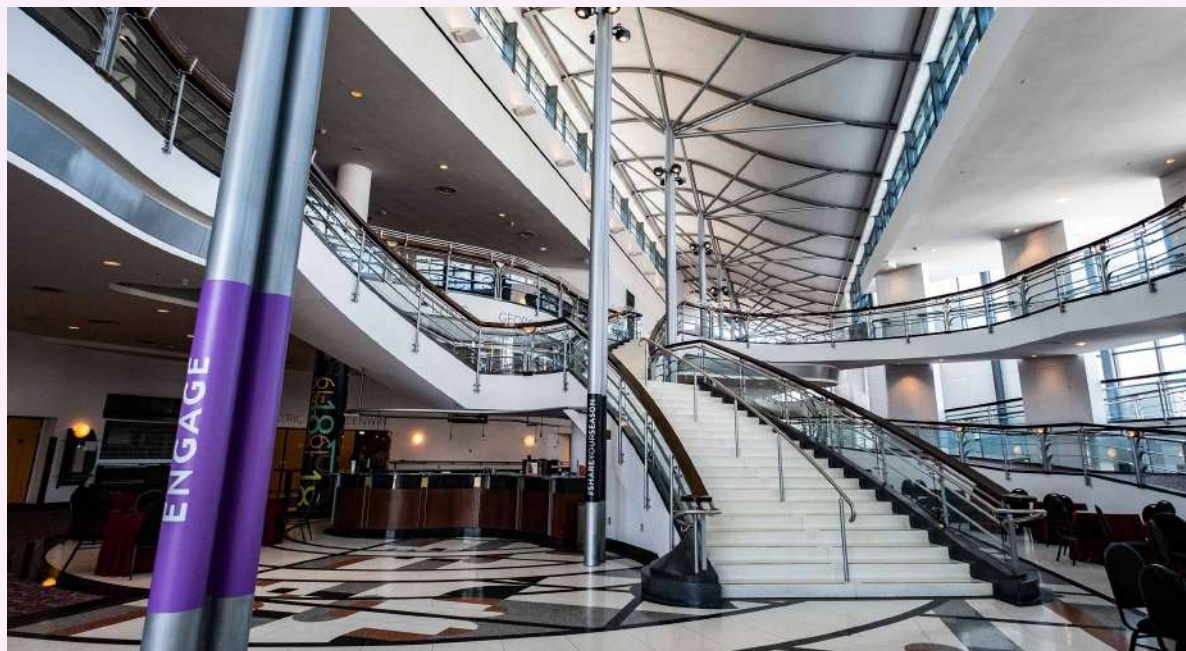
# MAIN LOBBY

An architectural marvel, the Meridian Arts Centre Main Lobby is designed to be a unique and multipurpose space, boasting high ceilings and curved staircases.

The Main Lobby is made up of the upper and lower lobbies, a coat check area, a curved lounge space, and three bars.

With a total capacity of 2400, the open concept layout of both levels makes an ideal reception and party space.

**Download:**  
[Full facility Floor Plans](#)





# ANCILLARY SPACES

Having extra space at your disposal is always a plus!

The following spaces are not separate, rentable spaces, but may be available for your use, **depending on the primary space being rented.**

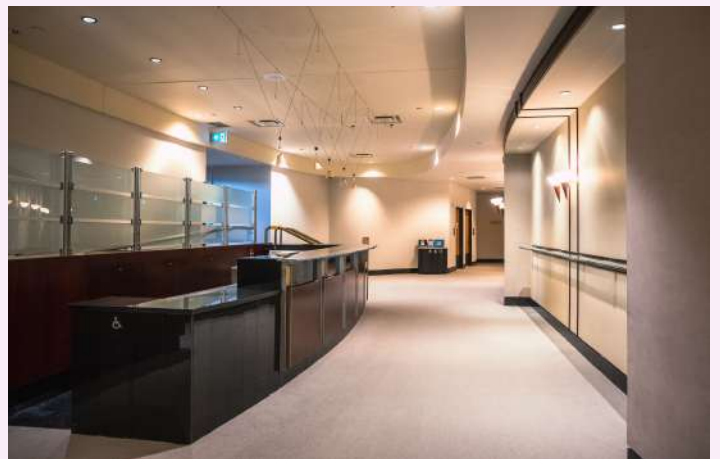
Just like the primary space being rented, these spaces are available for you to use however you'd like, with the option to use and rearrange our in-house furniture, or, to work with one of our preferred rental suppliers to bring in your own.

*More information can be provided upon request.*

## George Weston Recital Hall VIP Lounge



## Lyric Theatre Bar



# In-House Catering



## Meet Executive Chef, Andrew Fong

Impress your guests with TO Live's in-house catering services.

TO Live's Executive Chef, Andrew Fong, brings forward years of culinary mastery, and leads a skilled team dedicated to exceeding your event vision. Our talented catering team will work with you to craft delicious, globally inspired cuisine, guaranteed to delight every palate.

TO Live's high standard of excellence guarantees fresh, high-quality ingredients, and offers personalized service, such as décor coordination, for your private event.

Whether corporate luncheons, cocktail receptions, or galas, our team will work with you to ensure a memorable dining experience and have your guests applauding the food.

Download: [TO Live Catering Menu](#)



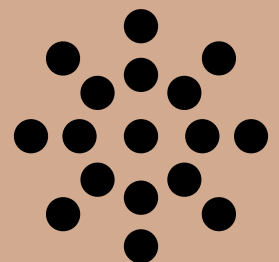


---

# Digital Signage

Digital signage offers a great way to brand the space for your event and personalize areas to your liking, and Meridian Arts Centre offers high-definition flat panel monitors for client use, free of charge, dependant on the space being utilized. These monitors are programmed and supervised by in-house personnel and can display still images and video content. A separate digital signage package with technical specifications will be provided upon booking.

**Anything displayed in real-time (like a PowerPoint presentation), will need to be set-up and operated by unionized IATSE personnel. Charges will apply.**



---

# Preferred Rental Suppliers



**(416) 391-0400**

[info.central@elementevents.com](mailto:info.central@elementevents.com)

[www.elementeventscanada.com](http://www.elementeventscanada.com)



**1 (888) 890-4321**

[nermes@getwrapped.ca](mailto:nermes@getwrapped.ca)

[www.getwrapped.ca](http://www.getwrapped.ca)



**(416) 239-6998**

[info@gatsbyvalet.com](mailto:info@gatsbyvalet.com)

[www.gatsbyvalet.com](http://www.gatsbyvalet.com)



**(416) 750-9272**

[info@divinefurniturerental.com](mailto:info@divinefurniturerental.com)

[www.divinefr.com](http://www.divinefr.com)



**1 (877) 894-1885**

[info@sentinelsecurityplus.com](mailto:info@sentinelsecurityplus.com)

[www.sentinelsecurityplus.com](http://www.sentinelsecurityplus.com)





---

# Frequently Asked Questions

## **What services are included?**

With your rental, you will be able to brand flat panel monitors throughout your rental space with your own photo or video content.

All in-house furniture and equipment is at your disposal.

The layout of our existing furniture can be reconfigured to your requirements.

## **What are the percentages for the service charge and taxes?**

Room rental prices and music tariffs are subject to 13% HST. All other line items are not subject to 13% HST. 18% service charge will be calculated on the price of food and beverage.

## **Can I have a third-party caterer cater my event?**

Yes. There will be a 20% Landmark Fee on the food and any third-party caterers must be approved by TO Live. TO Live maintains the bar. In-house kitchen not available.

## **What is your payment structure?**

A deposit is required immediately upon signing a contract with TO Live and the balance is required ten (10) business days prior to the event. Following the event, a settlement will take place where you will either be charged or refunded any differences from the final estimate.

## **Is your facility air-conditioned?**

Yes, our facilities are fully air-conditioned.

## **Is your facility wheelchair accessible?**

Yes, all levels of Meridian Arts Centre can be accessed via elevator.

## **Do you provide linens and dishes?**

Linens, dishes, cutlery, glassware and all other F&B related items are rented in from our exclusive rental supplier, Element Event Solutions. This gives our clients the flexibility to choose the look they prefer.

## **When do I get access to my event space?**

You can access your event space as early as 8:00am on the day of your event.

## **Who is my contact for the day of the event?**

Our Event Manager will be your contact person up to and including the day of your event. That person will be introduced to you upon signing the contract.

## **Is your venue licensed?**

Yes, Meridian Arts Centre is a fully licensed facility with in-house beverage services.

## **What hotels are easily accessible for my guests?**

Novotel North York is within walkable distance of Meridian Arts Centre.

## **Where can my guests park their vehicles?**

There are multiple parking lots located near Meridian Arts Centre. Valet Parking can also be arranged.

## **What is the closest public Transit to Meridian Arts Centre?**

The TTC subway at North York Centre Station is located steps away from the building and has signage directing you to Meridian Arts Centre exiting the station turnstiles.

## **What types of events can Meridian Arts Centre accommodate?**

Meridian Arts Centre has hosted a wide spectrum of events including large corporate attractions, town halls, fundraisers, networking events, product launches, weddings, bar and bat mitzvahs, retirement parties and holiday parties.

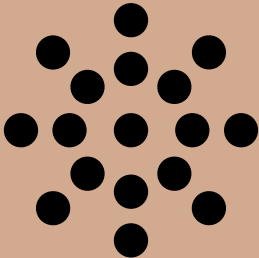
Some of our clients include TD Bank, RBC, BMO, KPMG, PwC, American Express, George Brown College, CTV, Elevate, and Canada's Walk of Fame.



# Rental Rates and Capacity

SPACE	SQ. FT	AVERAGE DAILY COST	CAPACITY				
			Boardroom	Classroom	Theatre	Reception	Banquet
Lyric Theatre	8018	\$10,000	-	-	561	-	-
George Weston Recital Hall	11,205	\$17,000	-	-	998	-	-
Greenwin Theatre	3850	\$5000	-	220	296	600	200
Studio Theatre	2000	\$3500	-	120	178	300	120
Upper Gallery	1850	\$1500	140	130	140	157	130
Lower Gallery	2000	\$1500	150	-	150	169	120
Main Lobby/Full Facility	-	\$25,000	-	-	-	2400	-

\*Additional costs to consider: Audio/Visual components, union costs, catering/food costs.  
Contact us for additional details.





---

# Contact Us

## Scott North

Director, Corporate & Private Events

(416) 368-6161 ext. 7139

[Scott.North@TOLive.com](mailto:Scott.North@TOLive.com)

