



Corporate Rentals Package



Scott North – Director, Corporate & Private Events
(416) 368-6161 ext. 7139, Scott.North@TOLive.com

Table of Contents

- | | |
|--|---|
| 3. <u>Meridian Hall</u> | 14. <u>In-House Catering</u> |
| 5. <u>Theatre & Stage</u> | 15. <u>Digital Signage</u> |
| 6. <u>Main Lobby</u> | 16. <u>Preferred Rental Suppliers</u> |
| 7. <u>Mezzanine</u> | 17. <u>Frequently Asked Questions</u> |
| 8. <u>Lower Lobby</u> | 19. <u>Rental Rates and Capacity</u> |
| 9. <u>West Plaza</u> | 20. <u>Additional Resources</u> |
| 10. <u>Castlepoint Numa Lounge</u> | 21. <u>Contact Us</u> |
| 11. <u>Rehearsal Hall</u> | |
| 12. <u>Ancillary Spaces</u> | |
| 13. <u>East/West Lounges</u> | |

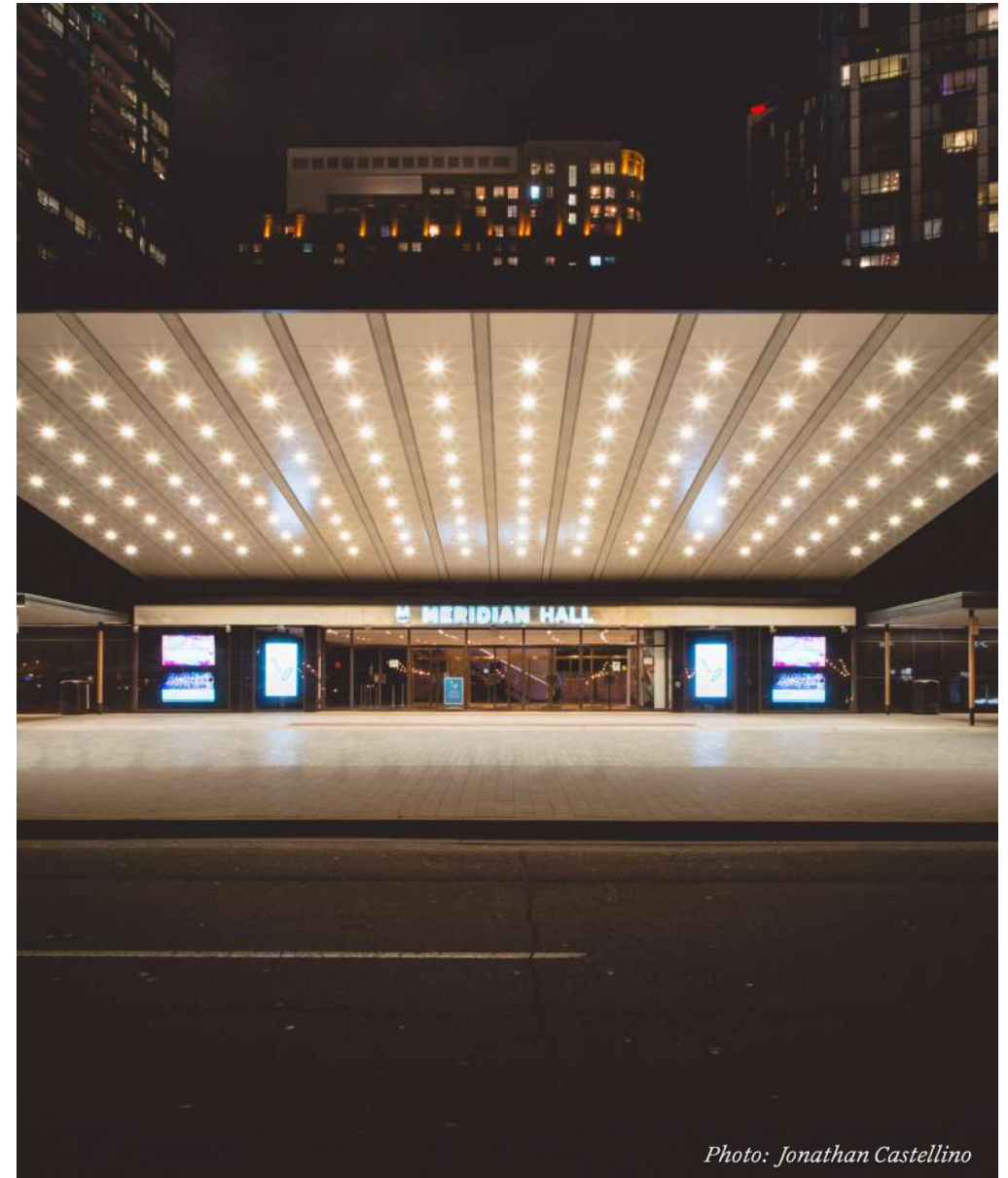


Photo: Jonathan Castellino

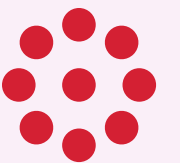
Meridian Hall



**1 Front St East,
Toronto, ON
M5E1B2**

Located in the heart of downtown Toronto, Meridian Hall is an integral part of the city's cultural sector, making it an exciting spot to host your private events. Dynamic and versatile, the venue is a unique setting for a wide variety of events, including professional conferences, product launches, car shows, trade shows, award shows, town halls, convocations, weddings, company holiday parties and fundraising galas.

In addition to the Main Theatre and Stage, the Lobbies, Lounges, Mezzanine, and West Plaza all offer a variety of options to host your event. With unique and customizable spaces, Meridian Hall offers limitless possibilities.



Meridian Hall

Meridian Hall opened as the O'Keefe Centre on October 1, 1960. Since its inception, countless renowned musicians and bands, dance companies, comedy acts, family programs, films with live orchestra, international performers, award shows, and special events have been hosted here.

When you decide to host an event at the Meridian Hall, you are sharing a space with the world's most noteworthy performers.



Theatre & Stage

At 3,172 seats, the Meridian Hall theatre boasts the largest soft-seat theatre in the country. A mid-house curtain can split the orchestra level in half at 1,160 seats to create a more intimate space.

For a more unique experience, the stage can also accommodate a variety of smaller events. The stage is equipped with state-of-the-art sound and lighting systems able to perform the most complex production functions.

Theatre Capacity

- Full Auditorium - 3,172
 - Orchestra - 2,133
- Mezzanine/Balcony - 1,039
- Mid-House Curtain - 1,160

Stage Capacity

- Boardroom 84
- Classroom - 225
- Theatre - 500
- Reception - 650
- Banquet - 400



Main Lobby

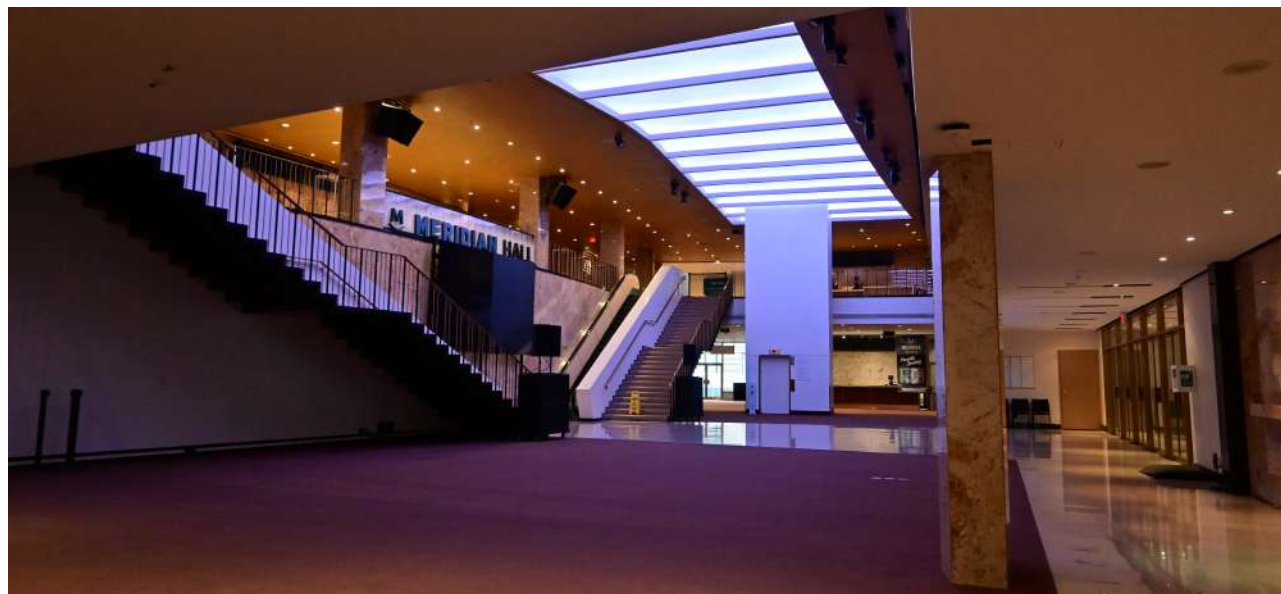
The Main Lobby is perfect for events of varying sizes and set-ups, whether extravagant, professional, functional, or all of the above.

The Main Lobby features a bar at either end, a large video wall to stream content, and a coffered ceiling equipped with customizable LED lights.

Capacity:

9,400 sq. ft.

- Boardroom - 60
- Classroom - 150
- Theatre - 400
- Reception - 1,500
- Banquet (with stage) - 200
- Banquet (without stage) - 300



Mezzanine

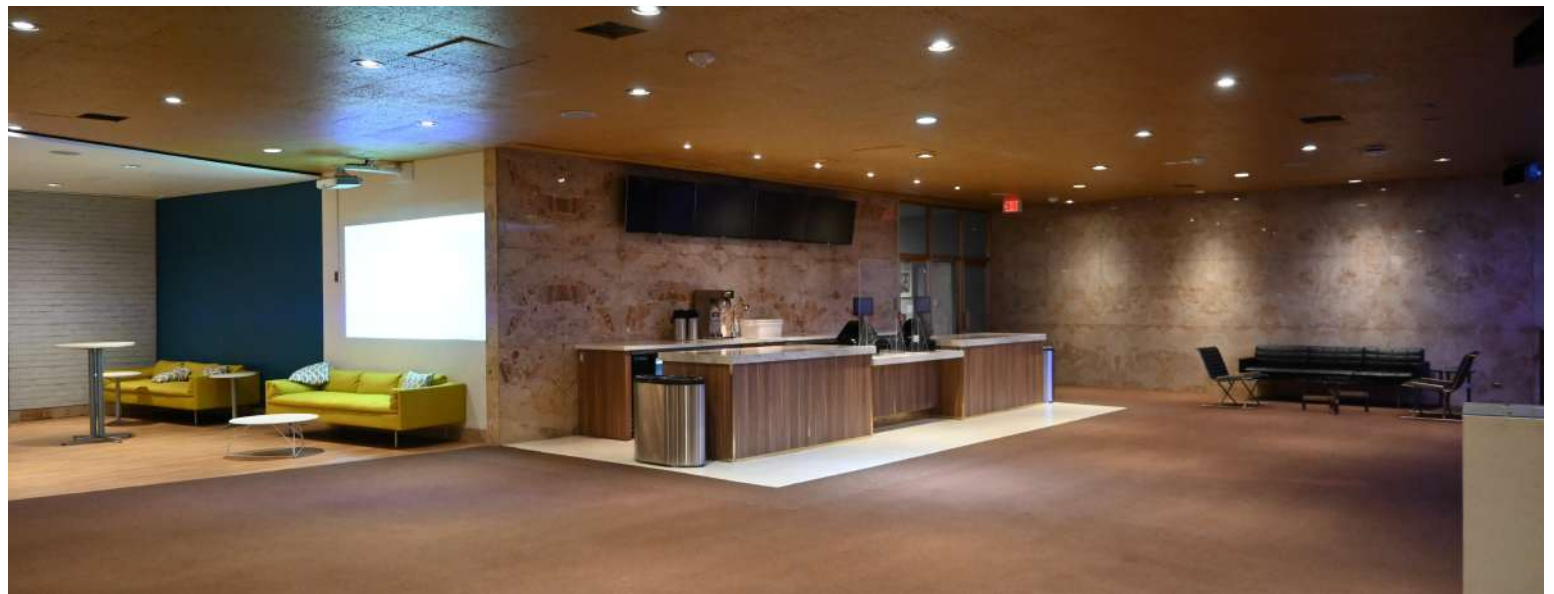
With two full bars, two large, versatile lounge spaces, and multiple screens available at your disposal, the Mezzanine is the ideal space for smaller social events.

This space is often used in conjunction with the Main Lobby to expand the event space.

Capacity:

8,700 sq. ft.

- Reception - 500
- Banquet - 240



Lower Lobby

The Lower Lobby is often used for private events in conjunction with one of our shows.

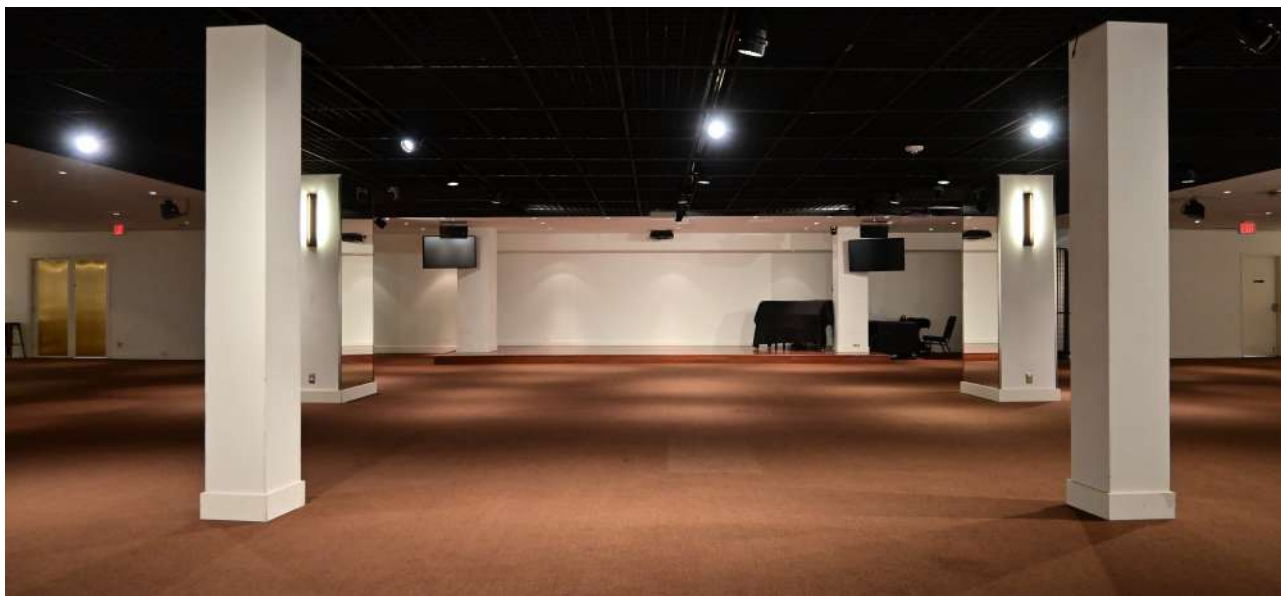
Two 21-foot bars flank the space with a built-in 28' X 11' stage in the middle. This space is ideal for a sit-down dinner that includes presentations and speeches using our built-in sound system.

Floating walls can allow the size, configuration and intimacy of the room to be changed.

Capacity:

13,896 sq. ft.

- Boardroom - 60
- Classroom - 160
- Theatre - 400
- Reception - 1,200
- Banquet - 300



West Plaza

Want to take the party outside?

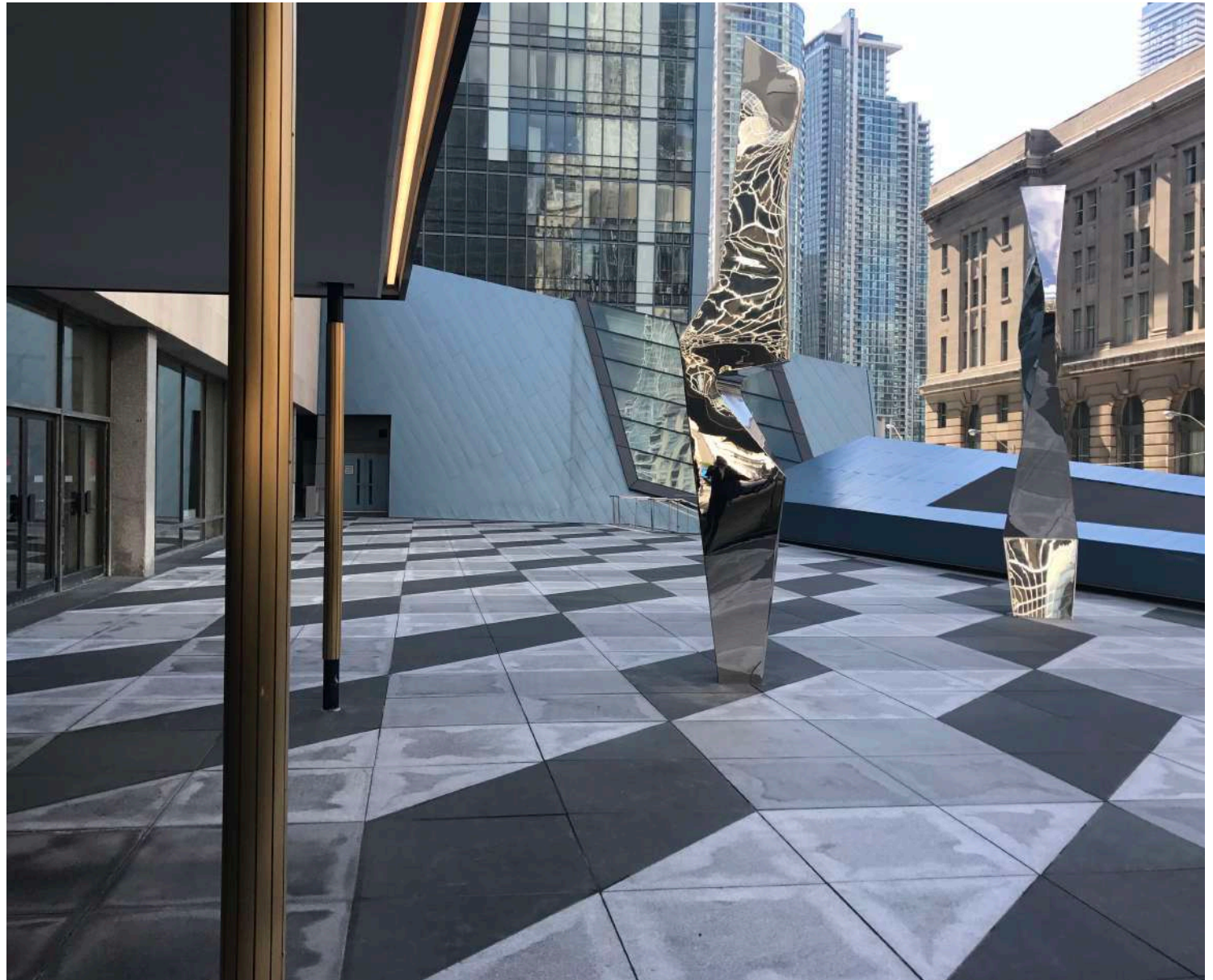
The West Plaza is the perfect place to extend the space of your event amongst the vibrant city-life and a great view of the CN Tower.

Host patio-style events during the day, or decorate the area with additional lighting for evening events.

Capacity:

3,885 sq. ft.

- Reception - 600
- Theatre - 450
- Banquet - 320



Castlepoint Numa Lounge

The Castlepoint Numa Lounge is a versatile room that can easily be converted into different spaces to accommodate various needs, including a meeting area, breakout space, and media room. Guests can also access the room through a separate Yonge Street entrance.

The Castlepoint Numa Lounge is also equipped with top quality track lighting & is suitable for a wide array of power needs.

Capacity:

2,024 sq. ft.

- Boardroom - 69
- Classroom - 120
- Theatre - 125
- Reception - 125
- Banquet - 125



Rehearsal Hall

Like the Castlepoint Numa Lounge, the Rehearsal Hall is another multi-purpose room that can be used as a breakout space, or meeting room. If required, guests can access the room through a separate Yonge Street entrance.

The large room with mirrored walls can be filled with furniture and decor to serve as a presentation space or reception area.

Capacity:

2,325 sq. ft.

- Boardroom - 69
- Classroom - 130
- Theatre - 200
- Reception - 200
- Banquet - 200



Ancillary Spaces

Having extra space at your disposition is always a plus!

The following spaces are not separate, rentable spaces, but may be available for your use throughout the duration of your rental, **depending on the primary space being rented.**

Just like the primary space being rented, these spaces are available for you to use however you'd like, with the option to use and rearrange our in-house furniture, or, to work with one of our preferred rental suppliers to bring in your own.

More information can be provided upon request.

Board Room



East and West Lounges ★



Main East/West Lounges★

The two identical Lounges located on either side of the Main Lobby are unique spaces that can be completely self-contained with a private bar and washrooms.

With a maximum capacity of 160 people each, they are perfect spaces for smaller meetings, dinners, or pre and post show receptions.

Capacity:

2,000 sq. ft.

- Boardroom - 38
- Classroom - 35
- Theatre - 75
- Reception - 160
- Banquet - 90

Features:

- Curved staircases leading down to Lower Lobby
- Total of 16 screens for digital signage

**Used as breakout space only.
Cannot be rented exclusively.**



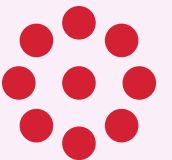
In-House Catering

Executive Chef Andrew Fong



In-house catering services at Meridian Arts Centre offer high quality, multicultural cuisine with personalized menu development, décor coordination and special request fulfillment services for your private event.

Whether samosas or sushi, a full course meal or a buffet, a sit-down dinner for 20, or a cocktail reception for 2,400 your guests will leave your event applauding the food.

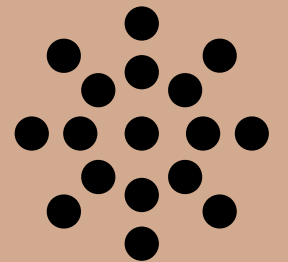


Digital Signage



Meridian Hall offers 74 high-definition flat panel monitors for client use, free of charge. These monitors are programmed and supervised by in-house personnel, and can display still images and video content. Digital signage offers a great way to brand the space for your event and personalize areas to your liking. A separate digital signage package with technical specifications will be provided upon booking.

Anything displayed in real-time (like a PowerPoint presentation), will need to be set-up and operated by unionized IATSE personnel. Charges will apply.



Preferred Rental Suppliers



(416) 391-0400
rentals@chairmanmills.com
www.chairmanmills.com



1 (888) 890-4321
nermes@getwrapped.ca
www.getwrapped.ca



(416) 239-6998
info@gatsbyvalet.com
www.gatsbyvalet.com



(416) 703-9236
info@cfrentals.com
www.cfrentals.com



(416) 750-9272
info@divinefurniturerental.com
www.divinefr.com



1 (877) 894-1885
info@sentinelsecurityplus.com
www.sentinelsecurityplus.com



Frequently Asked Questions

What services are included in my rental?

With your rental, you will be able to brand all 74 flat panel monitors throughout the building with your own photo or video content.

You will be able to use our digital surround-sound systems in the Main & Lower Lobbies as well as sound and lighting systems in the Theatre. LED lighting on the ceiling in the Main Lobby as well as a moving light system are also included at no extra charge.

All in-house furniture and equipment is at your disposal. The layout of our existing furniture can be reconfigured to your requirements.

What are the percentages for the service charge and taxes?

Room rental prices are subject to a 13% HST. All other line items are not subject to 13% HST. 18% service charge will be calculated on the price of food and beverage.

Can I have a third party caterer cater my event?

Yes. There will be a 20% Landmark Fee on the food and any third party caterers must be approved by Meridian Hall. Meridian Hall maintains the bar. In-house kitchen not available.

What is your payment structure?

A deposit is required immediately upon signing a contract with Meridian Hall and the remaining amount is required ten (10) business days prior to the event. Following the event, a settlement will take place where you will either be charged or refunded any differences from the final estimate.

When do I get access to my event space?

You are able to access your event space as early as 8:00am on the day of your event.

Is your facility wheelchair accessible?

Yes, all three levels of Meridian Hall can be accessed via elevator.

Is your facility air-conditioned?

Yes, our facilities are fully air-conditioned.



Frequently Asked Questions

Can I hold an outdoor event or ceremony?

Yes, currently Meridian Hall has a multi-level terrace on the East side of the building and a plaza area located on the West.

Who is my contact for the day of the event?

Our Event Manager will be your contact person up to and including the day of your event. That person will be introduced to you upon signing the contract.

Is your venue licensed?

Yes, Meridian Hall is a fully licensed facility with in-house beverage services.

What hotels are easily accessible for my guests?

There are several four and five star hotels within a short walk of Meridian Hall. A list can be provided upon request.

Where can my guests park their vehicles?

There are four large parking lots in close proximity to the building. Valet parking can also be arranged.

Do you provide linens and dishes?

Linens, dishes, cutlery, glassware and all other F&B related items are rented in from our exclusive rental supplier, Chairman Mills. This gives our clients the flexibility to choose the look they prefer.

Can I hold an outdoor event or ceremony?

Yes, currently Meridian Hall has a multi-level terrace on the East side of the building and a plaza area located on the West.

What is the closest public Transit to Meridian Hall?

The TTC subway at Union or King station, as well as GO Transit's train or bus service located at Union Station.

What types of events can Meridian Hall accommodate?

The Meridian Hall has hosted a wide spectrum of events including large corporate attractions, town halls, fundraisers, networking events, product launches, weddings, bar and bat mitzvahs, retirement parties and holiday parties.

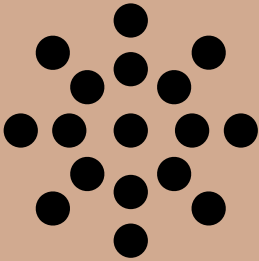
Some of our clients include TD Bank, RBC, BMO, KPMG, PwC, American Express, Canadian Screen Awards, George Brown College, CTV, Elevate, Industrial Alliance, Canada's Walk of Fame.



Rental Rates and Capacity

SPACE	SQ. FT	APPRX. DAILY COST	CAPACITY				
			Boardroom	Classroom	Theatre	Reception	Banquet
Rehearsal Hall	2325	\$3500	69	150	200	200	200
Castle Point Numa Lounge	2024	\$3000	69	100	130	130	130
Lower Lobby	13,896	\$13,000	60	250	400	1200	300
Main Lobby	9400	\$13,000	60	165	450	1500	200
Mezzanine	8700	\$13,000	-	-	-	300	230
Main Lobby & Mezzanine	18,100	\$13,000	-	-	-	1800	660
Main Lobby & Lower Lobby	23,296	\$13,000	-	-	-	2700	920
Main Lobby & Lower Lobby & Mezzanine	31,996	\$26,000	-	-	-	3000	1160
On Stage	-	\$50,000	84	250	600	750	400
Full Facility	-	\$50,000	-	-	3172	3000	1200
West Plaza	3,885	\$13,000	-	-	300	384	300

* Additional costs to consider: Audio/Visual components, union costs, catering/food costs. Contact us for additional details



Additional Resources

[Digital Signage Package for Meridian Hall](#)

[Meridian Hall Floor Plans](#)

[Meridian Hall Technical Specifications](#)

[Meridian Hall Seating Plan](#)

[Take a virtual tour of Meridian Hall!](#)



Contact Us

Scott North

Director, Corporate & Private Events

(416) 368-6161 ext. 7139

Scott.North@TOLive.com



@toliverentals



TO Live Rentals

