



VENUE INFORMATION PACKAGE


11 POLSON STREET, TORONTO, ON, M5A 1A4

T: (416) 469 5655 | F: (416) 469 5547

REBELTORONTO.COM

 @REBELTORONTO

 @REBELTORONTO

 @REBEL_TORONTO

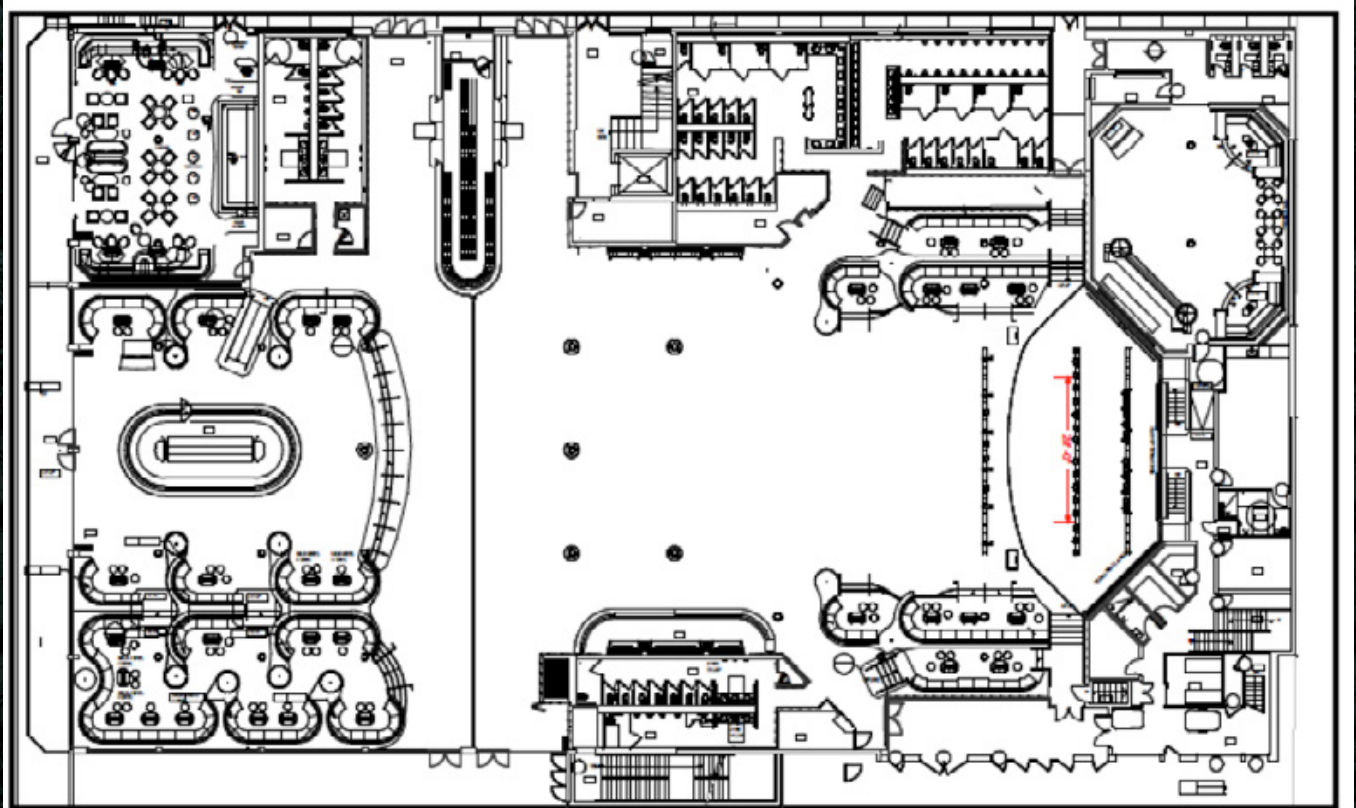




REBEL ESTABLISHES A NEW INDUSTRY STANDARD FOR CORPORATE AND SOCIAL EVENT EXPERIENCES IN TORONTO; MERGING UNRIVALED CUSTOMER SERVICE, STRIKING DESIGN AND STATE-OF-THE-ART TECHNOLOGY. THIS 45,000 SQUARE FOOT VENUE HOUSES FOUR DISTINCT SPACES THAT OFFER DIVERSITY IN AMBIENCE, DÉCOR AND VIBE. THE BRILLIANT CONJUNCTION OF PRODUCTION ELEMENTS SUCH AS AVANT-GARDE AUDIOVISUAL TECHNOLOGY, THEATRICAL LED LIGHTING INSTALLATIONS, AND CUSTOMIZED LUXURIOUS FURNITURE IS GUARANTEED TO OFFER YOUR GUESTS A UNIQUE, EXTRAORDINARY AND UNPARALLELED EXPERIENCE.



REBEL OVERVIEW



- 3700 Venue Capacity
- Multi-dimensional motorized trussing complete with intelligent lighting hung beneath an LED lighting display
- Built in state of the art sound system with concert acoustics
- Multimedia production elements and built in theatrical lighting effects
- High capacity restrooms & lush amenities throughout
- 6 LED illuminated full service bars
- All rooms are wheelchair accessible
- Grand private terrace & 2 upper patios offering an iconic view of Lake Ontario and Toronto's skyline
- Dual Sided Coat Check and Registration Facilities
- Fixed opulent lounges available throughout venue, offering an unobstructed and exceptional view of the stage and central light show
- Convenient parking available across the street for 700 vehicles
- 3 panelled 72ft x 13 ft video wall installation. Main screen resolution = 1050 x 400
- Full in-house planning services and event support

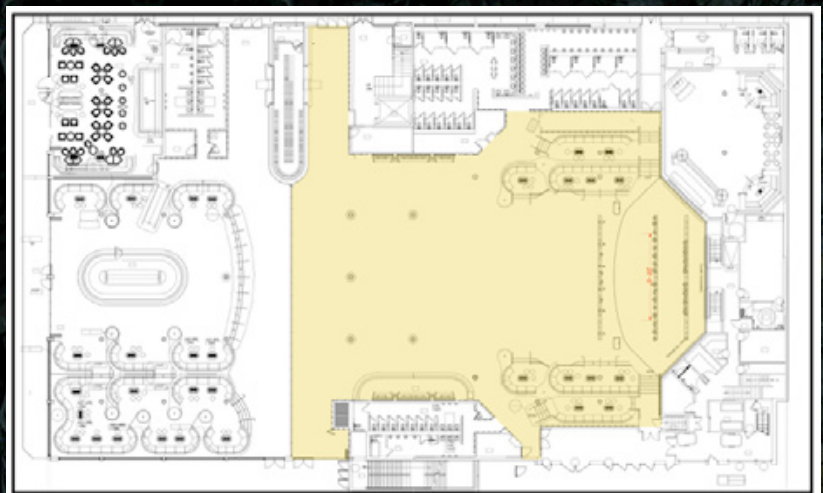
MAIN ROOM SPECIFICATIONS



- 9000 Usable sq. ft.
- 29ft ceiling, featuring the central LED light installation
- 2 LED illuminated full service bars
- 65 Foot Stage
- VIP lounges along the right and left-hand sides of the main stage; Seats 100
- Direct backstage access to 3 private dressing rooms, washrooms & showers
- 72 ft. LED Video Wall Installation
- Floating LED panels surrounding main floor
- State-of-the-art Surround Sound Audio
- Direct access to coat check and washrooms

| EVENT STYLE | CAPACITY |
|-----------------------|----------|
| Theatre Style Seating | 800 |
| Cocktail Reception | 1500 |
| Banquet | 600 |

*Capacity may vary according to furniture style and placement requirements



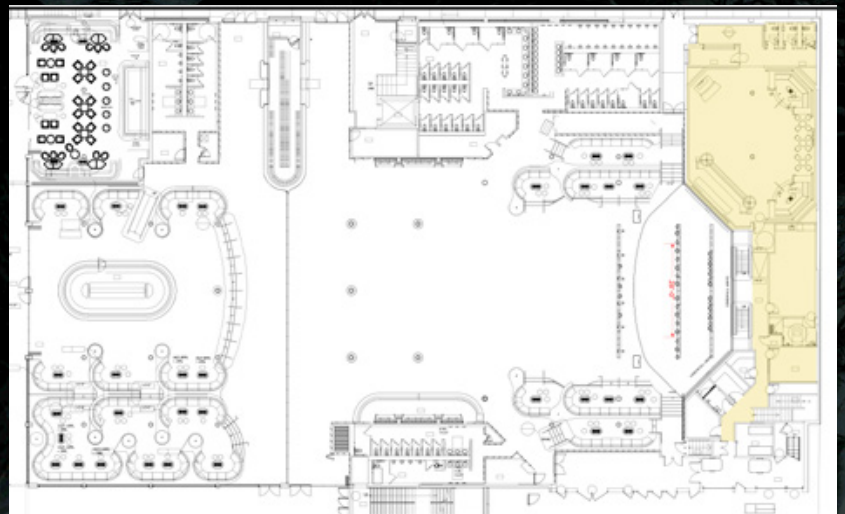
BACKSTAGE AMENITIES



- Backstage Lounge
- 120 Person Capacity
- Full Service Bar
- Plush Built-in Lounge Seating
- Dual Direct Access to Backstage
- Direct Access to Private Washrooms & Showers

BACKSTAGE AMENITIES

- 3 Dressing Rooms
- 2 Production Offices
- Wi-Fi Access



CITY BAR/ROOM



- 7500 Usable sq. ft
- 1 LED illuminated full service bar
- Customizable LED lighting color display throughout room and bar
- The entire west wall is composed of glass panels, offering a beautiful view of the grand terrace, Lake Ontario and Toronto Skyline
- Fixed, multi-level banquettes apt to seat 130 guests comfortably
- Direct access to 135 ft wide terrace overlooking Lake Ontario and Toronto's skyline
- Wheelchair Accessible
- Access to coat check and washrooms

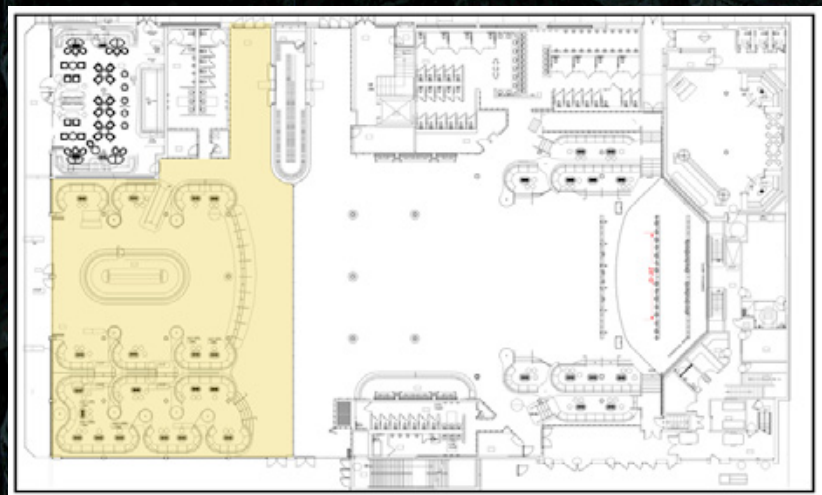
EVENT STYLE

Cocktail Reception

CAPACITY

500

*Capacity may vary according to furniture style and placement requirements



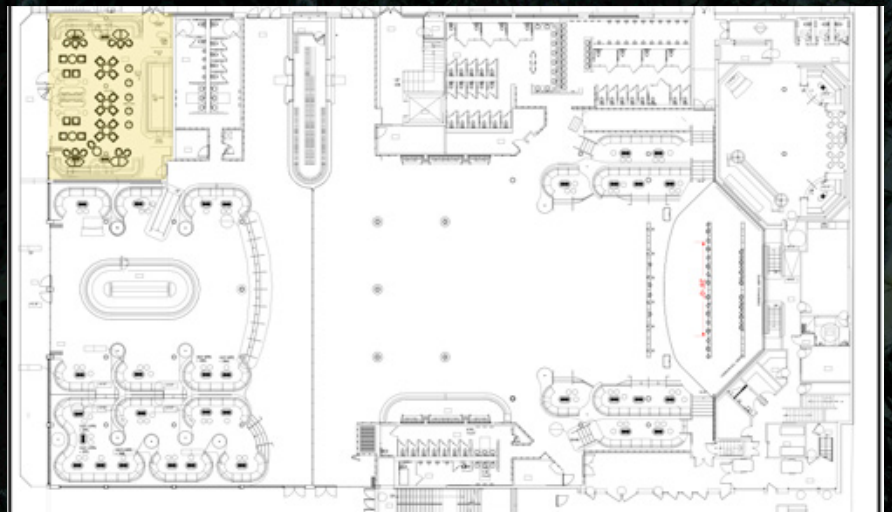
THE PURPLE ROOM



- 1600 Usable sq. ft
- Full Service Bar
- Private entrance via 135 ft patio overlooking Lake Ontario and Toronto Skyline

| | |
|--------------------|-----------------|
| EVENT STYLE | CAPACITY |
| Cocktail Reception | 80 |

*Capacity may vary according to furniture style and placement requirements



NOIR



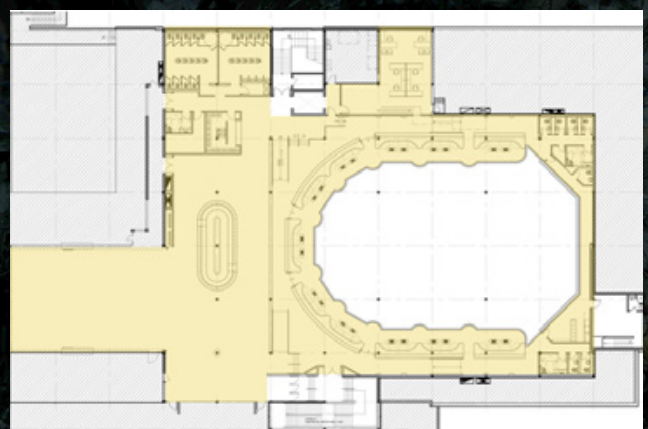
- Glass room features a retractable roof decorated with LED light installations
- 1 LED illuminated full service bar
- Floor to ceiling glass panels dividing main reception area from mezzanine
- Lush, built-in VIP lounges along mezzanine overlooking main room; Seats 120
- Direct access to two private upper patios with a spectacular Lakeview
- Access to private washrooms and coat check

EVENT STYLE

| | |
|----------------------|-----|
| Theatre | 300 |
| Cocktail | 400 |
| Cocktail + Mezzanine | 900 |
| Banquet | 200 |

CAPACITY

*Capacity may vary according to furniture style and placement requirements



SPEC SHEET



AUDIO SPECIFICATIONS

MAIN PA CONSISTS OF THE FOLLOWING:

- D&B J8 Series Line Array - 10 Cabs
- D&B J12 Series Line Array - 2 Cabs
- D&B B2 Sub Cabinets - 10 Subs
- Powered with 30D D&B Amplifiers - 16 Amps
- D&B Y7P Front Fills - 2 Cabs
- Under balcony zone and upper and rear Delay Speakers EV - EVF-1122D - 16 Cabs
- Avid Profile Venue Console for FOH

MONITOR PACKAGE INCLUDES THE FOLLOWING:

- SC 48 Monitor console
- 12 D&B M4 Passive Wedges
- 1 x B6 drum sub
- 8 Passive mixes
- 2 D&B B2 Subs (Sidefill)
- 2 D&B V10 Tops (Sidefill)

STAGE POWER & BREAKOUTS

- 3 - 12 Channel Stage Boxes
- 3 - 30amp Breakout Boxes

MICROPHONES & STANDS

- 12 Tall Boom Stand
- 12 Short Boom Stand
- 4 Shure SM81
- 6 Shure SM58
- 6 Shure SM57
- 4 Sennheiser 604
- 4 Sennheiser e904
- 1 Shure Beta 52
- 1 Shure Beta 91
- 4 Active Direct Input boxes
- 6 Passive Direct Input boxes

LIGHTING

UPSTAGE TRUSS:

- 6 Elation Platinum HFX - 280W Lamp RGBY 3-in-1 Luminaire (Beams)
- 6 Elation ZW19 -10W RGBW 4-in-1 LED (Washes)

MIDSTAGE TRUSS:

- 8 Elation Platinum HFX
- 8 Elation ZW19

FOH TRUSS 1:

- 6 LED Lekos
- 6 ZW19

FOH TRUSS 2:

- 16 Elation ACL 360i - 60W RGBW 4-in-1 LED

LIGHTING CONSOLE:

- MA2 on PC With Command Wing & Touch screen monitor

VIDEO

2 OUTER LED WALLS:

- 6.4MM Pixel Pitch
- 1080h x 1698w Resolution
- 1600 HZ Refresh Rate

CENTRE LED WALL:

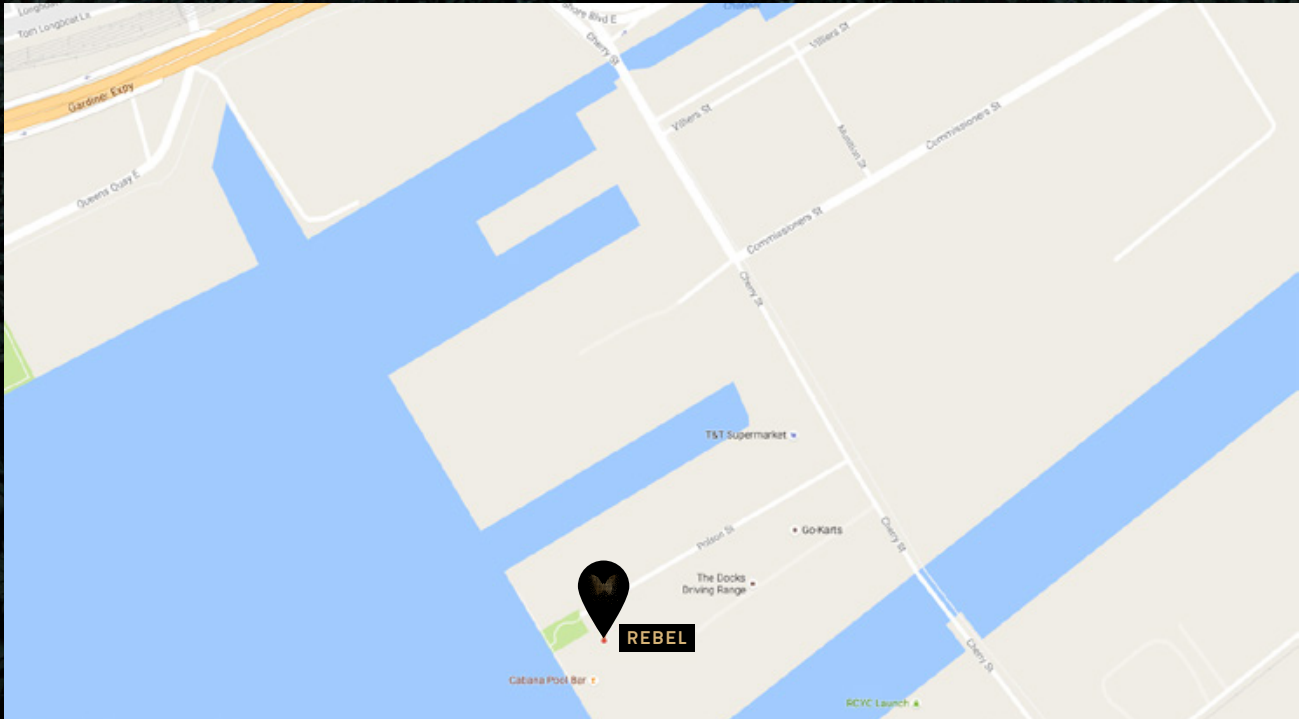
- 10MM Pixel Pitch
- 732h x 1920w Resolution
- 1600 HZ Refresh Rate

CHRISTIE SPYDER X20 - 0808

INPUTS:

- HDSDI, SDI, 3G SDI, DVI, RGBHV, Composite

CONTACT



MIRELA DAVIS
DIRECTOR OF CORPORATE SALES AND EVENTS

Head Office: 416.869.9444
 Polson Pier Office: 416.469.5655
 M: 416.624.5188
 mirela@inkentertainment.com

CARLO SUAREZ
CORPORATE EVENT MANAGER & SALES

Polson Pier Office: (416) 469 5655 ext. 303
 M: (416) 939 1437
 carlo@inkentertainment.com

11 POLSON STREET, TORONTO, ON, M5A 1A4

T: (416) 469 5655 | F: (416) 469 5547

REBELTORONTO.COM

 @REBELTORONTO

 @REBELTORONTO

 @REBEL_TORONTO