



St. LAWRENCE CENTRE FOR
THE ARTS

Corporate Rentals Package

TO Live Rentals

Scott North – Director, Corporate & Private Events
(416) 368-6161 ext. 7139, Scott.North@TOLive.com



Our Past Clients

Google

ELEVATE

 Pinterest

 Microsoft

 RGD

 BellMedia

 YouTube

 TORONTO

 ROGERS

 ONTARIO
CREATES

 TORONTO STAR

 TikTok

 CANADA POSTES
POST CANADA



SickKids®

 ACADEMY
OF CANADIAN CINEMA & TELEVISION

 ACADÉMIE
CANADIENNE DE CINÉMA ET DE TÉLÉVISION

 CBC

 CANADA'S
WALK OF FAME

 KPMG

Meridian

 FRANKLIN
TEMPLETON

 Special
Olympics

UFC



Table of Contents

4. [St. Lawrence Centre for the Arts](#)
 5. [Jane Mallett Theatre](#)
 6. [Jane Mallett Lobbies](#)
 7. [Bluma Appel Theatre](#)
 8. [Bluma Appel Lobbies](#)
 9. [Rehearsal Hall](#)
 10. [Ernest Balmer Lounge](#)
 11. [In-House Catering](#)
 12. [Digital Signage](#)
13. [Preferred Rental Suppliers](#)
14. [Frequently Asked Questions](#)
15. [Rental Rates and Capacity](#)
 16. [Contact Us](#)



St. Lawrence Centre for the Arts

Opening in 1970 as part of the city's centennial celebrations, the St. Lawrence Centre for the Arts is an iconic venue in downtown Toronto, with a rich history of celebrated performances and local activity.

The St. Lawrence Centre features a modernist design with a distinctive glass façade, as designed by Gordon S. Adamson and Associates. The venue was named after the nearby St. Lawrence neighbourhood and has played a significant role in Toronto's cultural scene, supporting both professional and community-based arts initiatives.

In addition to being an ideal space for concerts, theatrical productions, and stage plays, the Jane Mallett and Bluma Appel Theatres and their adjoining lobbies are well-suited for a variety of private events, including meetings, presentations, awards ceremonies, networking events, conferences, parties, and more.

[Take a virtual tour of the St. Lawrence Centre](#)



27 Front St East,
Toronto, ON
M5E 1B4



JANE MALLETT THEATRE

Jane Mallet Theatre is the smallest of the two theatres at the St. Lawrence Centre, with the intimate set up leaving no seat too far from the stage!

Featuring a semi-circular protruding stage, this space is capable of handling elaborate productions, if needed, though, the Jane Mallet Theatre is more perfectly suited for smaller scale events, such as presentations and meetings.

With 275 seats below, and 224 up top, the theatre seats a total of 499.

Download:

[JMT Technical Specifications](#)

&

[JMT Seating Plan](#)



JANE MALLETT

UPPER AND LOWER LOBBY

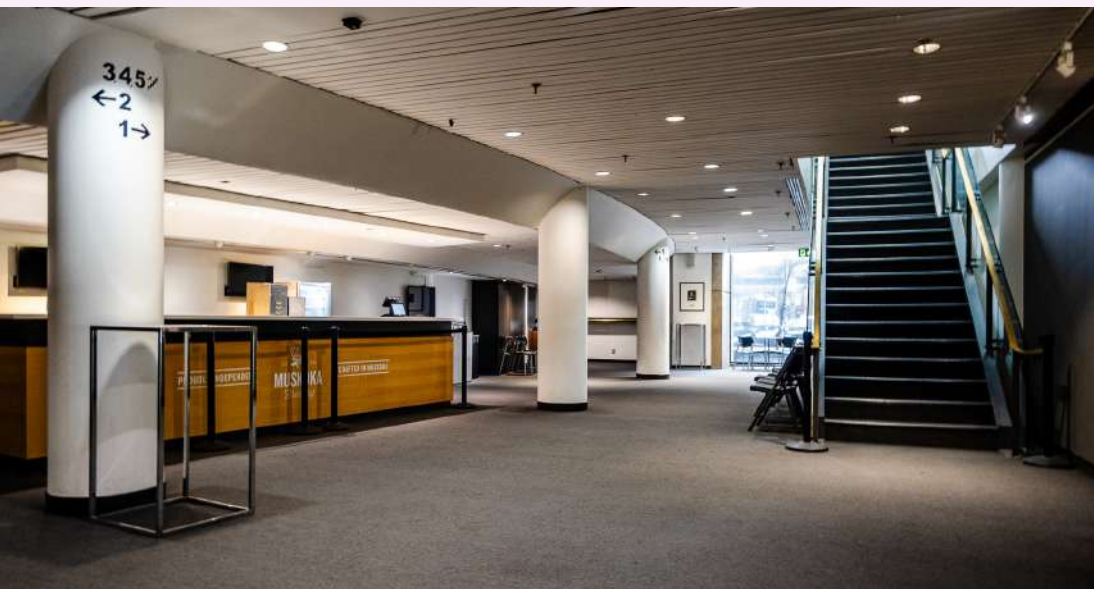
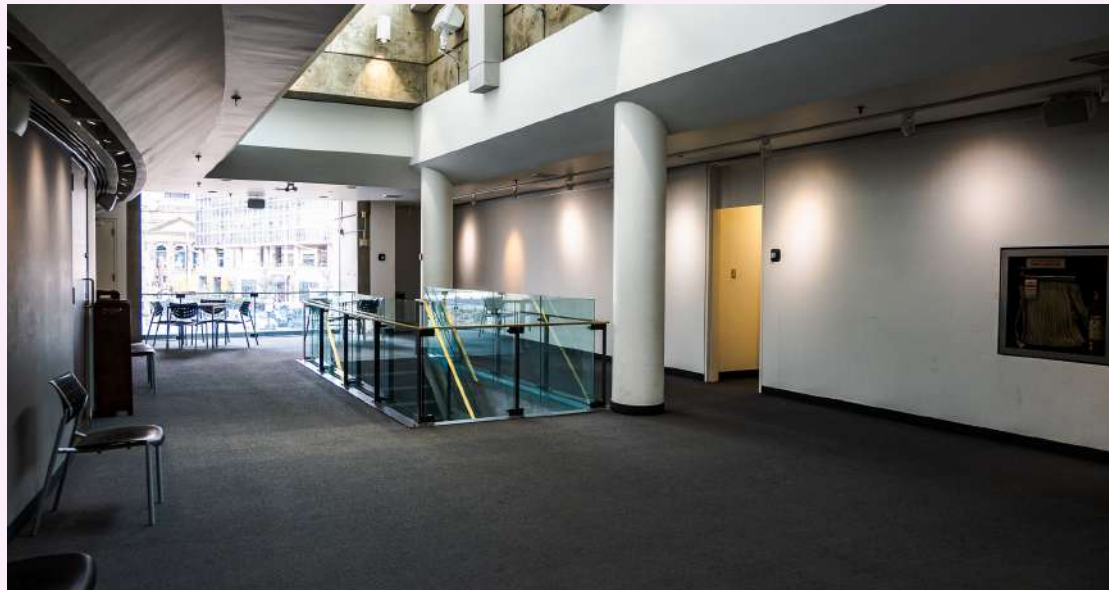
Combined, the Upper and Lower Lobbies fit a total of 287 people for a reception.

The Lower Lobby features a full bar, while the Upper Lobby boasts a skylight and an incredible view of the CN Tower, making the Upper and Lower Lobbies the perfect spaces for pre-show or post-show receptions, networking events, cocktail receptions, and more.

A total of 10 screens are also available for digital signage use.

Download:

[Jane Mallett Lobby
Floor Plans](#)



BLUMA APPEL THEATRE

As the larger of the two theatres at the St. Lawrence Centre, the beautiful, bright Bluma Appel Theatre seats a total of 868 guests, including 3 private boxes with 4 seats on either side of the theatre that could be used for VIPs, if desired.

The theatre features a proscenium stage, and unique lighting, providing it with a classic appearance while also housing and accommodating high-tech production equipment, allowing for larger scale productions, conferences, presentations, and more.

Download:

[BAT Technical Specifications](#)

&

[BAT Seating Plan](#)

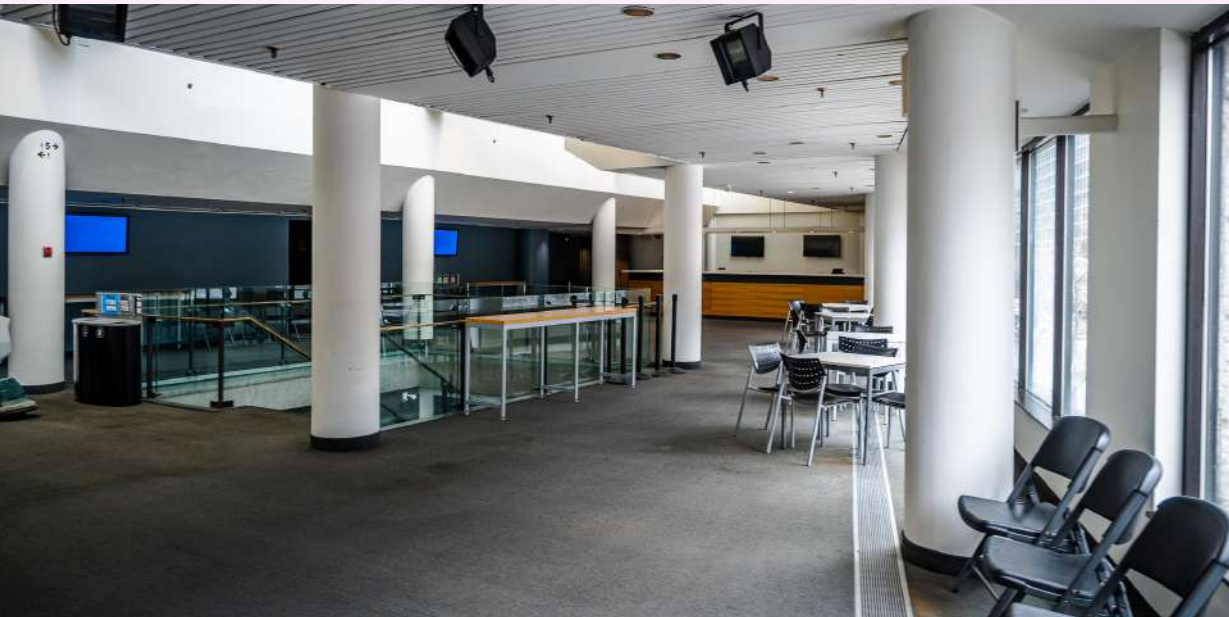


BLUMA APPEL UPPER AND LOWER LOBBY

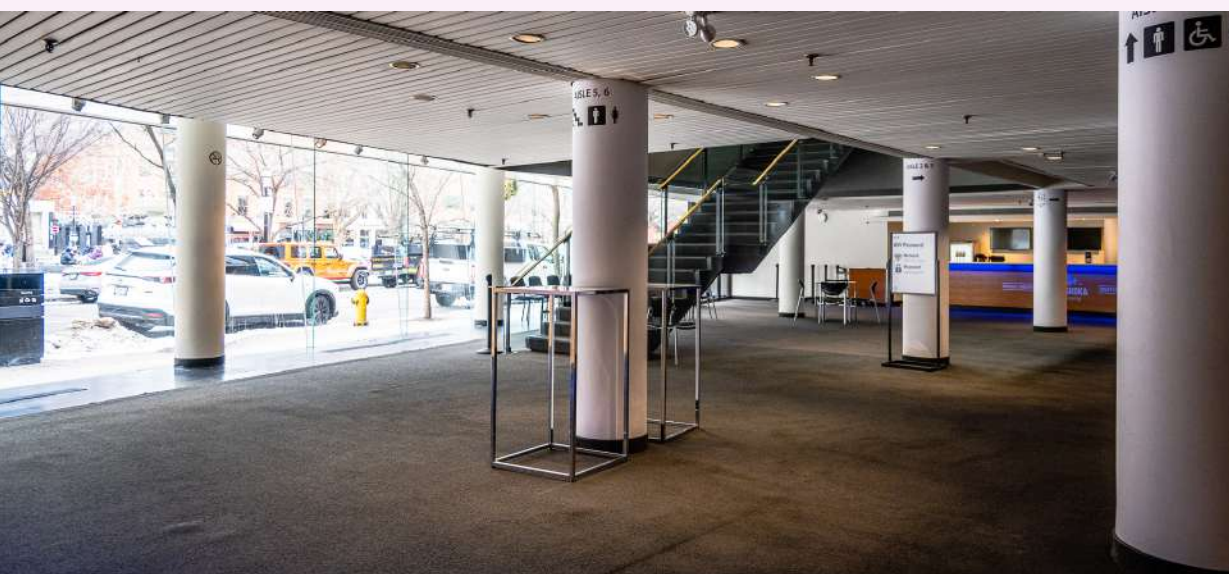
Both the Upper and Lower Lobbies feature floor-to-ceiling windows, overlooking Toronto's Berczy Park and filling both spaces with ample natural light. Skylights in the Upper Lobby increase the natural lighting.

The lobbies feature a total of 13 screens for digital signage use, a total of three bars, and washrooms on both levels. Coat check is available in the Lower Lobby. Combined, the lobbies hold 616 people standing.

The Upper Lobby also houses the Ernest Balmer Lounge, available for use as a VIP lounge, or extra storage space.



Download:
[Bluma Appel Lobby](#)
[Floor Plans](#)



REHEARSAL HALL

The Rehearsal Hall, located backstage at the St. Lawrence Centre, is an easily customizable and spacious room available to host smaller gatherings.

This room can be modified to fit the needs of a variety of smaller events, such as meeting or headquarter space. Talent and/or VIP can access the Rehearsal Hall through a separate entrance.



Event Spaces

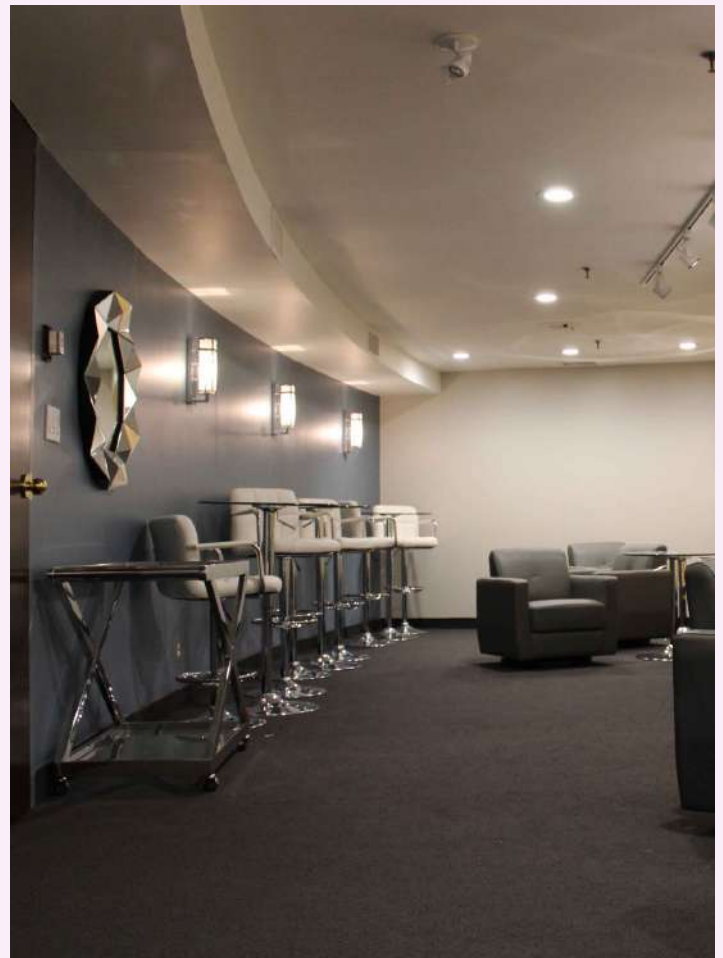
ANCILLARY SPACES

Having extra space at your disposal is always a plus!

The following space is not a separate, rentable space, but may be available for your use, depending on the primary space being rented.

Just like the primary space being rented, this space is available for you to use however you'd like, with the option to use and rearrange our in-house furniture, or, to work with one of our preferred rental suppliers to bring in your own.

Ernest Balmer Lounge





In-House Catering

Meet Executive Chef, Andrew Fong

Impress your guests with TO Live's in-house catering services.

TO Live's Executive Chef, Andrew Fong, brings forward years of culinary mastery, and leads a skilled team dedicated to exceeding your event vision. Our talented catering team will work with you to craft delicious, globally inspired cuisine, guaranteed to delight every palate.

TO Live's high standard of excellence guarantees fresh, high-quality ingredients, and offers personalized service, such as décor coordination, for your private event.

Whether corporate luncheons, cocktail receptions, or galas, our team will work with you to ensure a memorable dining experience and have your guests applauding the food.

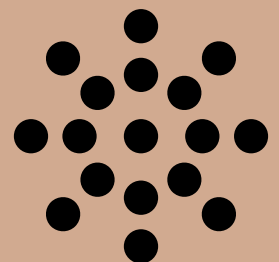
Download: [TO Live Catering Menu](#)



Digital Signage

20 Flat-panel digital screens are available throughout the St. Lawrence Centre for the Arts for client use, free of charge. These monitors are programmed and supervised by in-house personnel and can display still images and video content. Digital signage offers a great way to brand the space for your event and personalize areas to your liking. A separate digital signage package with technical specifications will be provided upon booking.

Anything displayed in real-time (like a PowerPoint presentation), will need to be set-up and operated by unionized IATSE personnel. Charges will apply.



Preferred Rental Suppliers



(416) 391-0400

info.central@elementevents.com

www.elementeventscanada.com



1 (888) 890-4321

nermes@getwrapped.ca

www.getwrapped.ca



(416) 239-6998

info@gatsbyvalet.com

www.gatsbyvalet.com



(416) 750-9272

info@divinefurniturerental.com

www.divinefr.com



1 (877) 894-1885

info@sentinelsecurityplus.com

www.sentinelsecurityplus.com



Frequently Asked Questions

What services are included?

With your rental, you will be able to brand flat panel monitors throughout the building.

All in-house furniture and equipment is at your disposal.

The layout of our existing furniture can be reconfigured to your requirements.

What are the percentages for the service charge and taxes?

Room rental prices and music tariffs are subject to 13%. All other line items are not subject to 13% HST. 18% service charge will be calculated on the price of food and beverage.

Can I have a third-party caterer cater my event?

Yes. There will be a 20% Landmark Fee on the food and any third-party caterers must be approved by the TO Live. TO Live maintains the bar. In house kitchen not available.

What is your payment structure?

A deposit is required immediately upon signing a contract with TO Live and the balance is required ten (10) business days prior to the event. Following the event, a settlement will take place where you will either be charged or refunded any differences from the final estimate.

When do I get access to my event space?

You can access your event space as early as 8:00am on the day of your event.

Is your facility wheelchair accessible?

Both the Bluma Appel Theatre and the Jane Mallett Theatre are wheelchair accessible only to the main level. Wheelchair access to washrooms is available for both theatres.

Is your facility air-conditioned?

Yes, our facilities are fully air-conditioned.

Who is my contact for the day of the event?

Our Event Manager will be your contact person up to and including the day of your event. That person will be introduced to you upon signing the contract.

Is your venue licensed?

Yes, the St. Lawrence Centre is a fully licensed facility with in-house beverage services.

What hotels are easily accessible for my guests?

There are several four and five-star hotels within a short walk of the St. Lawrence Centre. A list can be provided upon request.

Where can my guests park their vehicles?

There are four large parking lots near the St. Lawrence Centre. Valet parking can also be arranged.

Do you provide linens and dishes?

Linens, dishes, cutlery, glassware and all other F&B related items are rented in from our exclusive rental supplier, Element Event Solutions. This gives our clients the flexibility to choose the look they prefer.

What is the closest public Transit to the St. Lawrence Centre?

The TTC subway is located nearby at Union or King stations, as well as GO Transit or bus service located at Union Station.

What types of events can the St. Lawrence Centre accommodate?

The St. Lawrence Centre can host a wide spectrum of events including large corporate attractions, town halls, fundraisers, networking events, product launches, weddings, bar and bat mitzvahs, retirement parties and holiday parties.

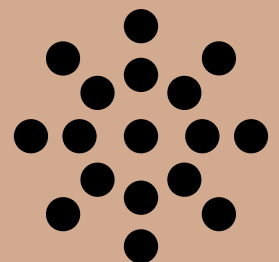
Some of our clients include TD Bank, RBC, BMO, KPMG, PwC, American Express, Canadian Screen Awards, George Brown College, CTV, Elevate, and, Canada's Walk of Fame.



Rental Rates and Capacity

SPACE	SQ. FT	AVERAGE DAILY COST	CAPACITY	
			Theatre	Reception
Jane Mallet Theatre	-	\$10,000	499	-
Jane Mallet Lobby	-	\$2500	-	287
Bluma Appel Theatre	-	\$15,000	868	-
Bluma Appel Lobby	-	\$4000	-	616
Ernest Balmer Lounge	-	N/A	-	25
Rehearsal Hall	-	N/A	75	100

*Additional costs to consider: Audio/Visual components, union costs, catering/food costs.
Contact us for additional details.



Contact Us

Scott North

Director, Corporate & Private Events

(416) 368-6161 ext. 7139

Scott.North@TOLive.com

