



STORM CROW
EVENTS

ABOUT SCM

Storm Crow Manor, the "nerdiest bar in Canada," is housed in a two-storey Victorian mansion in the heart of the Church-Wellesley village. Our lovingly designed space is filled with countless science-fiction, horror and fantasy fandom references, from *The Shining* to *Star Wars*.



FULL VENUE

CAPACITY

- 140 Seated
- 200 + Standing Reception

A/V CAPABILITIES

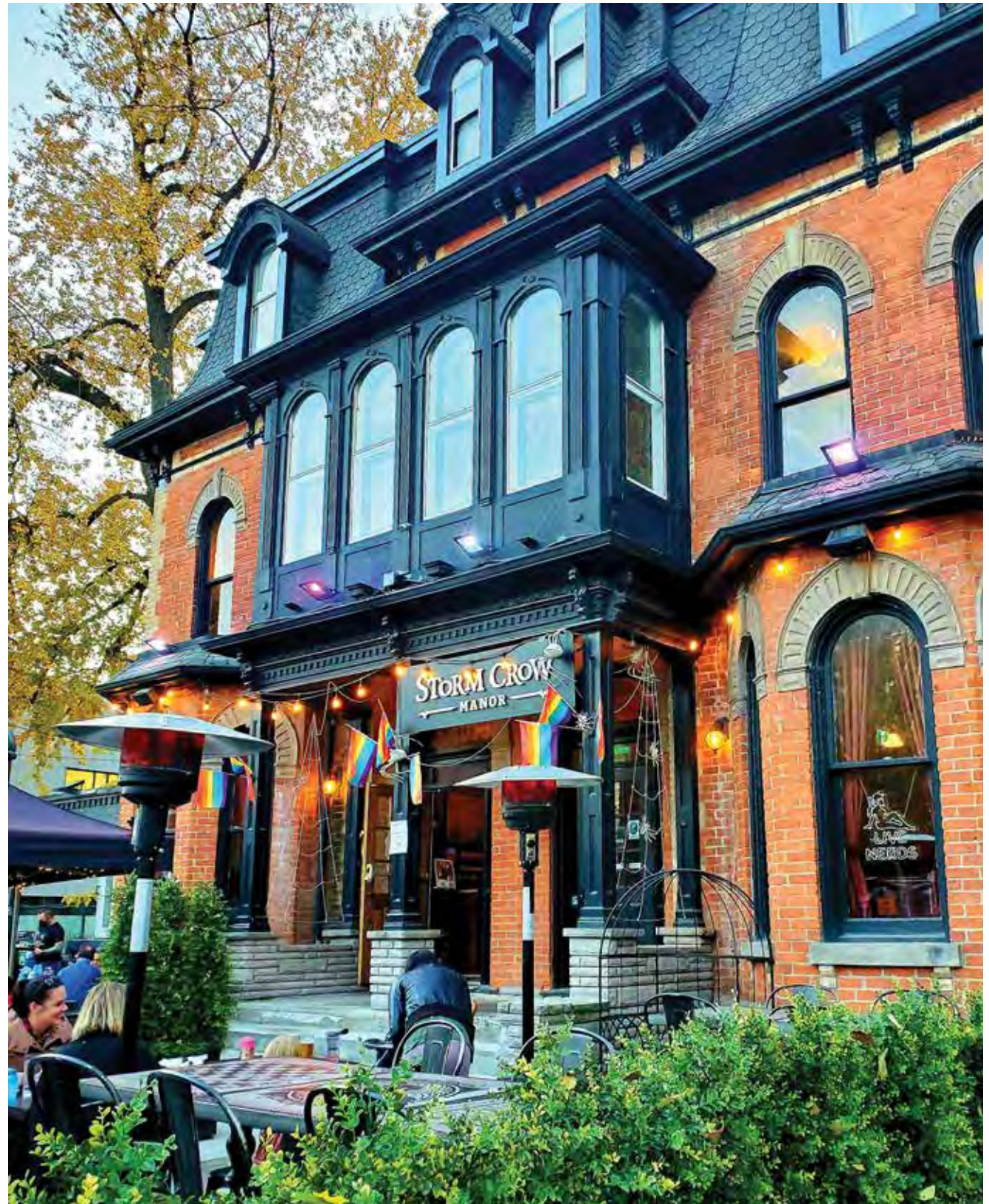
- 100" Screen + Projector
- 82" Samsung HDTV
- 42" Samsung HDTV
- Integrated Sound System
- Customizable Lighting

FULL VENUE IS IDEAL FOR:

- Weddings
- Cocktail Receptions
- Seated Dinners
- Product Launches
- Tastings
- Corporate Holiday Parties
- And More!

ADDITIONAL DETAILS

- 3 Bars
- 2 Floors
- 7 Theme Rooms



THE RED RUM ROOM

Bathed in crimson light and steeped in devilish allure, this space exudes an eerie ambiance with a touch of the infernal—perfect for a night of wicked indulgence.

CAPACITY

- 27 Seated

A/V CAPABILITIES

- 82" Samsung HDTV
- Wifi



CYBERPUNK

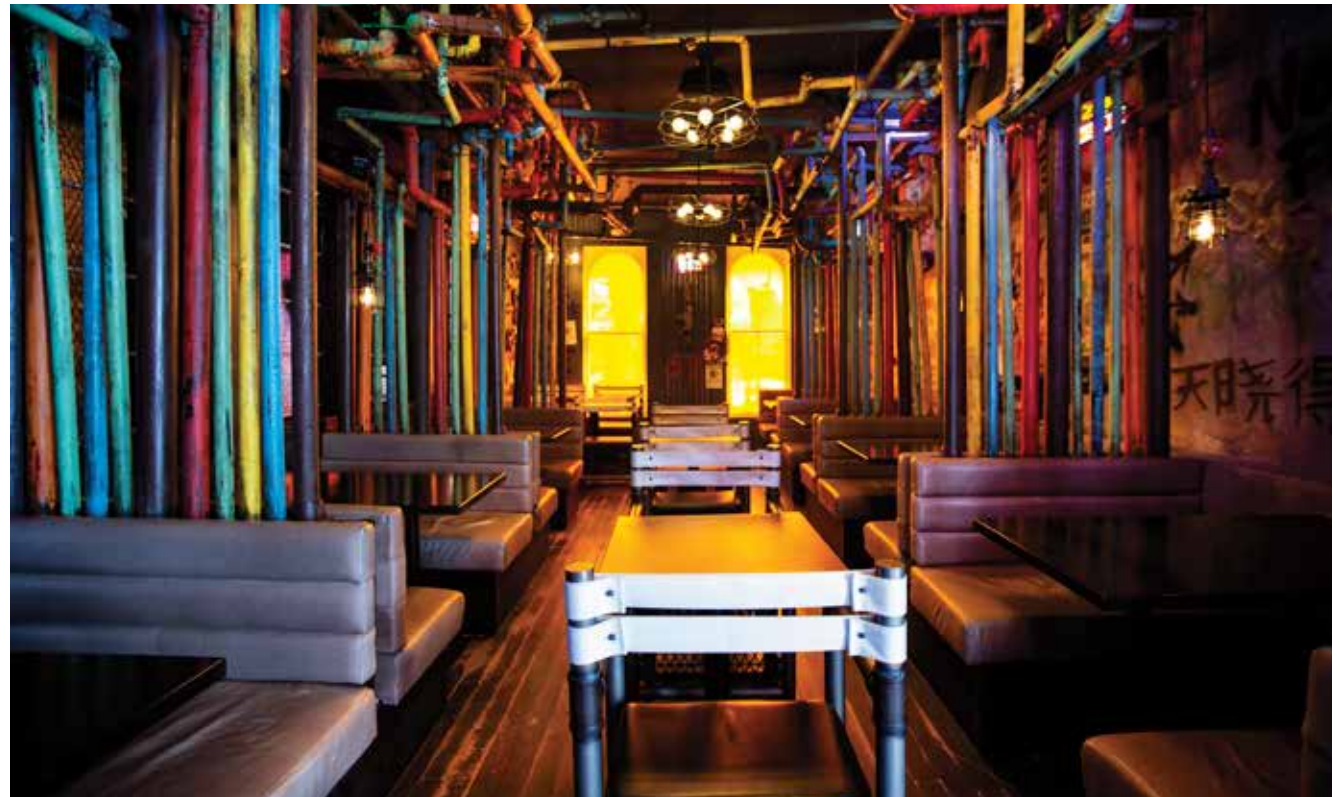
Fans of Blade Runner and other cyberpunk classics will feel right at home in this neon-drenched, futuristic hideaway.

CAPACITY

- 34 Seated

ADDITIONAL DETAILS

- Booth Seating
- Customizable Lighting



THE ECLECTIC PUB

Fans of HP Lovecraft's Cthulhu will especially appreciate this large pub-like chamber, decorated with a very unusual array of foreign sci-fi movie posters.

CAPACITY

- 40 Seated
- 40 Standing Reception

A/V CAPABILITIES

- 100" Screen and Projector
- Wifi



MARY SHELLEY BAR

Directly connected to the Eclectic Pub, this mad scientist's lab is a throwback to classic horror, in honour of Frankenstein's author.

Semi Private Space

CAPACITY

- 10 Seated
- 10 Standing Reception



SECOND FLOOR

CAPACITY

- 106 Seated
- 120 Standing Reception

A/V CAPABILITIES

- 100" Screen + Projector
- 82" Samsung HDTV
- Integrated Sound System
- Customizable Lighting

2ND FLOOR IS IDEAL FOR:

- Weddings
- Cocktail Receptions
- Seated Dinners
- Product Launches
- Tastings
- Corporate Holiday Parties
- And More!

INCLUDES

- Eclectic Pub
- The Black Lodge
- Cyberpunk
- Mary Shelley Bar



NAUTILUS

*Hidden behind a secret door in a
bookcase, this submarine-themed
chamber offers a nautical night you
won't soon forget.*

CAPACITY

- 20 Seated

A/V CAPABILITIES

- 42" Samsung HDTV
- Wifi



VICTORIAN HUNTING LODGE

*Beauty is in the eye of the
Beholder in this cozy 19th century
alternate reality, featuring two
monstrous "trophy" heads...*

Semi Private Space

CAPACITY

- 16 Seated or Standing

ADDITIONAL DETAILS

- Fireplace
- Private Bartender Available



FIRST FLOOR

CAPACITY

- 36 Seated
- 40 Standing Reception

A/V CAPABILITIES

- 42" Samsung HDTV
- Integrated Sound System
- Customizable Lighting

1ST FLOOR IS IDEAL FOR:

- Micro Weddings
- Cocktail Receptions
- Product Launches
- Tastings
- Corporate Holiday Parties
- And More!

ADDITIONAL DETAILS

- Nautilus
- Victorian Hunting Lodge



EVENT INFORMATION

COMPLIMENTARY SERVICES

- Service Staff
- Event Coordinator
- Flatware & Glassware
- Custom Menu Printing
- A/V Access

PARKING

The nearest parking lots can be found:

- Public Parking Lot
15 Wellesley Street East
- Public Parking Lot
13 Isabella Street
- Street Parking Available
on Church St and
Dundonald St

MINIMUM SPEND

Storm Crow Manor does not charge a venue rental fee. Instead, we charge based on a minimum food & beverage spend (plus 13% HST and 20% Gratuity).

All food and beverage is counted towards this minimum.

We strive to offer fair, competitive and transparent pricing.

Our minimum spend requirements vary according to seasonality. During the slow season (January-April), we offer reductions in our pricing.

Any charges from outside vendors will not go towards your minimum food & beverage spend.

ADDITIONAL EXPENSES FOR YOUR CONSIDERATION

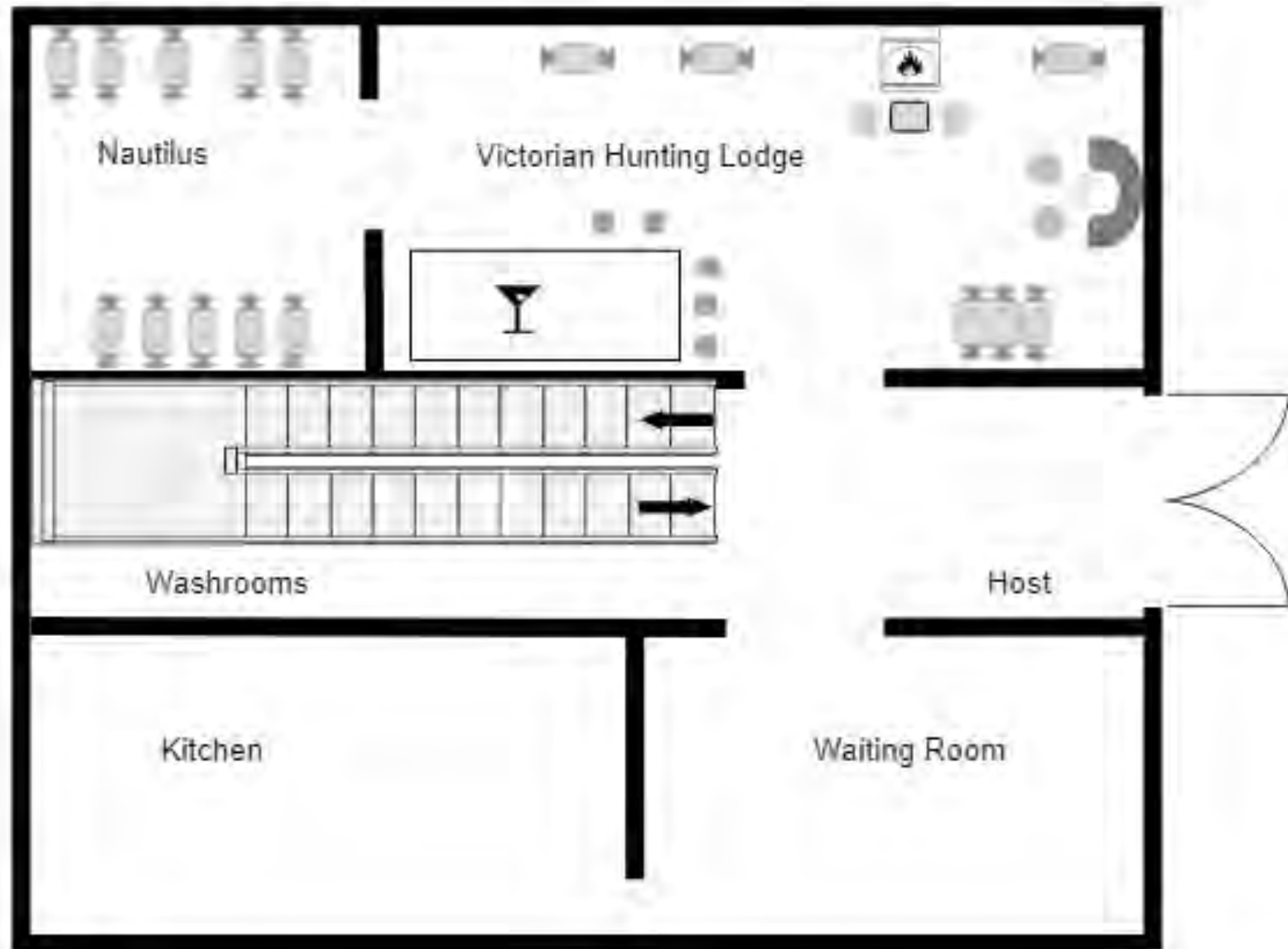
Furniture Removal - If your event requires a large set up with moving of furniture (tables, chairs etc.)

Storm Crow Manor will require a fee for set-up and tear down. This fee can range between \$200-\$800+.

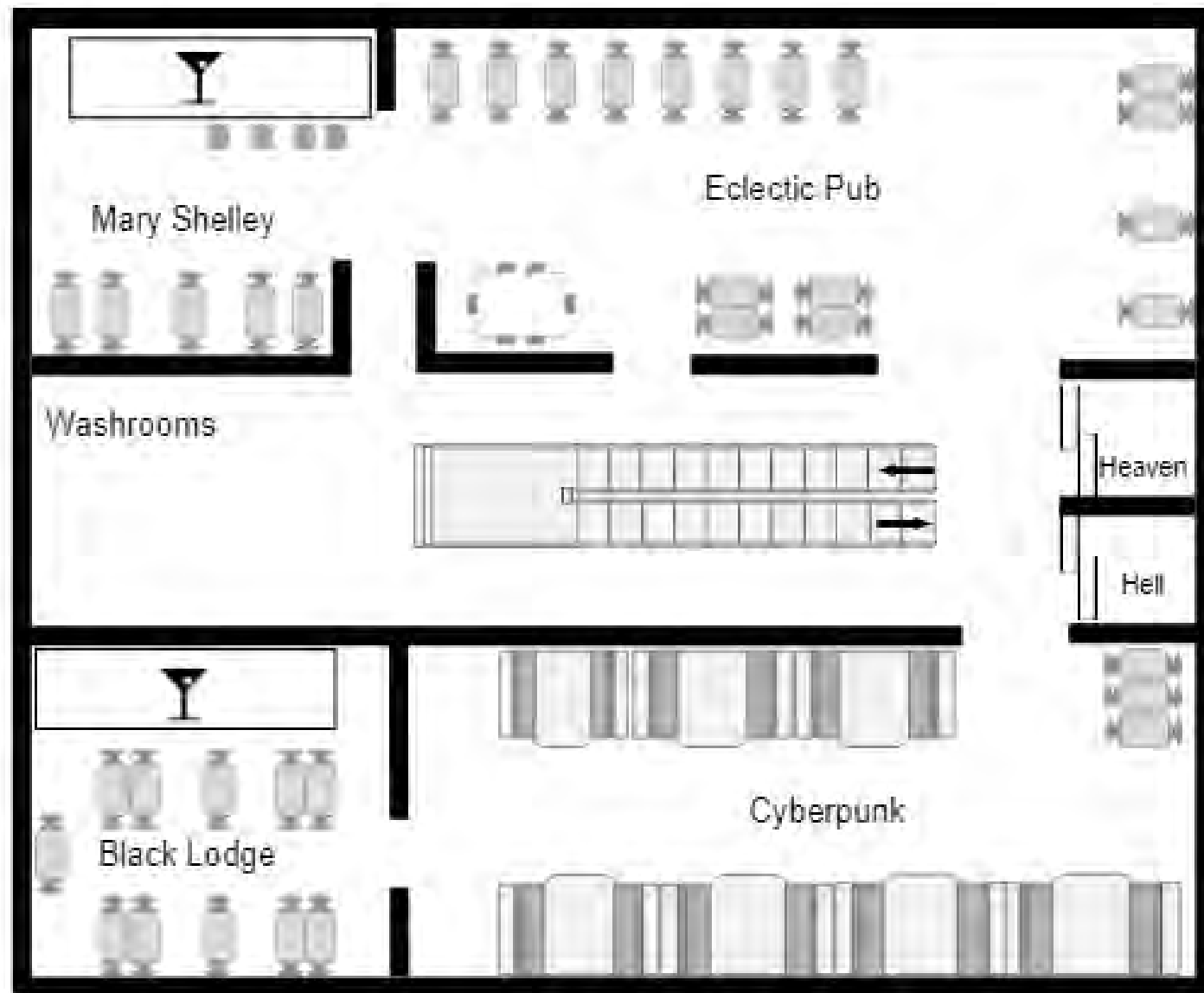
This will be determined by the Events Manager and will be notified once the Floor Plan has been agreed upon.

Rentals - Rentals will be charged for specialty items that need to be brought in specifically for your event that the restaurant does not carry in house.

FLOOR PLAN - FIRST FLOOR



FLOOR PLAN - SECOND FLOOR



MENU

PASSED / STATIONS / DINNER



PASSED

Each order serves 12 guests

V - Vegan VG - Vegetarian GF - Gluten-Free

VEGETARIAN

Deep Fried Mozzarella Sticks

Tomato Sauce \$40

Deep Fried Mac and Cheese

Rum BBQ Sauce \$40

Deep Fried Pickles

Buttermilk Ranch \$30

Egg Rolls

Cabbage + Carrot + Onion \$30

VEGAN

Impossible Sliders

Spicy Vegan Aioli + Caramelized Onions \$80

Sweet Chili Tofu Bao

Sweet Chili + Cucumber + Hoisin \$65

Mini Tofu Bites

Wafu + Tofu + Chili + Sesame + Green Onion \$60

MEAT

Beef Sliders

Cheddar + Signature Sauce + Tomato + Red Onion \$60

Hot Honey Fried Chicken Sliders

Hot Honey + Coleslaw \$80

Baked Chicken Sliders

Pesto + Swiss + Mayo + Fig Compote \$80

Fried Chicken Bao

Sweet Chili + Cucumber + Hoisin \$65

Jerk Chicken & Waffle

Coleslaw + Green Onion \$55

Mini Chicken Bites

Sweet Chili + Wonton + Red Pepper + Sesame + Green Onion \$60

Pulled Pork Sliders

BBQ Sauce + Pickled Cabbage \$70

SEAFOOD

Grilled Shrimp

Mango Salsa \$35

SWEETS

Mini Caramel Donuts - VG

Caramel Centre \$55

Churros - VG

Chocolate Centre \$36

Brownies - V + GF

Coconut Caramel Sauce \$75

Petit Fours - VG

Lemon Tartlets + Opera Squares + Raspberry Financiers + Pistachio Rectangles + Coffee Eclairs + Chocolate Eclairs + Apple Black Current Squares + Apricot Flan + Chocolate Tartlets \$75

***Allergy Statement:** We cannot guarantee that any of our products are free from allergens (including but not limited to, SOY, WHEAT, EGGS, PEANUTS, TREE NUTS, MILK) as we share equipment to store, prepare and serve them.

STATIONS

V - Vegan VG - Vegetarian GF - Gluten-Free

LITE

Each order serves 15 guests

Charcuterie Board - GF

*Calabrese + Prosciutto + Figs +
Grapes + Manchego + Brie +
Cantaloupe + Fig Jam + Dijon
\$130*

Grill Platter

*Steak + Chicken Breast + Fried
Calamari + Grilled Corn +
Coleslaw + Chimichurri +
Tater Tots \$60*

Chicken Wing Platter

*3 lbs Wings (Choice of Sauces) +
Ranch \$55
(Choices: Doom Sauce, Rum BBQ,
Honey Garlic, Lemon Pepper,
Cajun, Salt & Pepper, Buffalo)*

MAIN

Each order serves 10 guests

AAA Prime Rib

Beef Gravy + Horseradish \$375

Roasted Turkey Breast

Chicken Gravy (GF) \$275

Carving Station

\$40 an hour (2 hr min)

BBQ Roast Chicken - GF

BBQ Sauce \$200

Jerk Chicken Legs - GF

Coleslaw \$185

English Banger Sausage

Chicken Gravy \$135

SALADS

Each order serves 10 guests

Caesar Salad

*Romaine + Croutons + Bacon +
Grana Padano + Caesar
Dressing \$80*

House Salad - V

*Mesclun Mix + Carrot +
Cucumbers + Diced Tomatoes +
Balsamic Dressing \$50*

Asian Slaw

*Romaine + Cabbage + Carrot +
Red Pepper + Edamame + Green
Onion + Sesame Seeds + Wafu
Dressing + Honey Garlic
Chicken \$100*

SIDES

Each order serves 10 guests

Mac and Cheese Bar - VG

*Bacon + Feta + Green Onions +
Tomatoes \$90*

Rice and Beans - VG \$60

Mashed Potatoes - VG

Cream + Butter \$75

Tortellini Salad

*Bacon + Grana Pardano +
Caesar Dressing \$110*

Sicilian Pasta Salad - VG

*Spanish Black Olives + Red
Peppers + Sundried Tomatoes +
Balsamic Vinaigrette + Feta +
Chilis \$50*

DESSERT

Each order serves 12 guests

Petit Fours - VG

*Lemon Tartlets + Opera
Squares + Raspberry Financiers
+ Pistachio Rectangles + Coffee
Eclairs + Chocolate Eclairs +
Apple Black Currant Squares +
Apricot Flan + Chocolate
Tartlets \$75*

Mini Caramel Donuts - VG

Caramel Centre \$55

Churros - VG

Chocolate Centre \$36

Brownies - V + GF

Coconut Caramel Sauce \$75

BAR

CASH / HOST / OPEN

Bar services operate according to the LCBO and Smart Serve Regulations



BAR

CASH BAR

Guests can order from our full bar selection. Guests will pay for their drinks when ordering.

HOST BAR

Host pays for their guests' drinks on a consumption basis. Limits can be placed on the bar.

ADD ONS

DRINK TICKETS

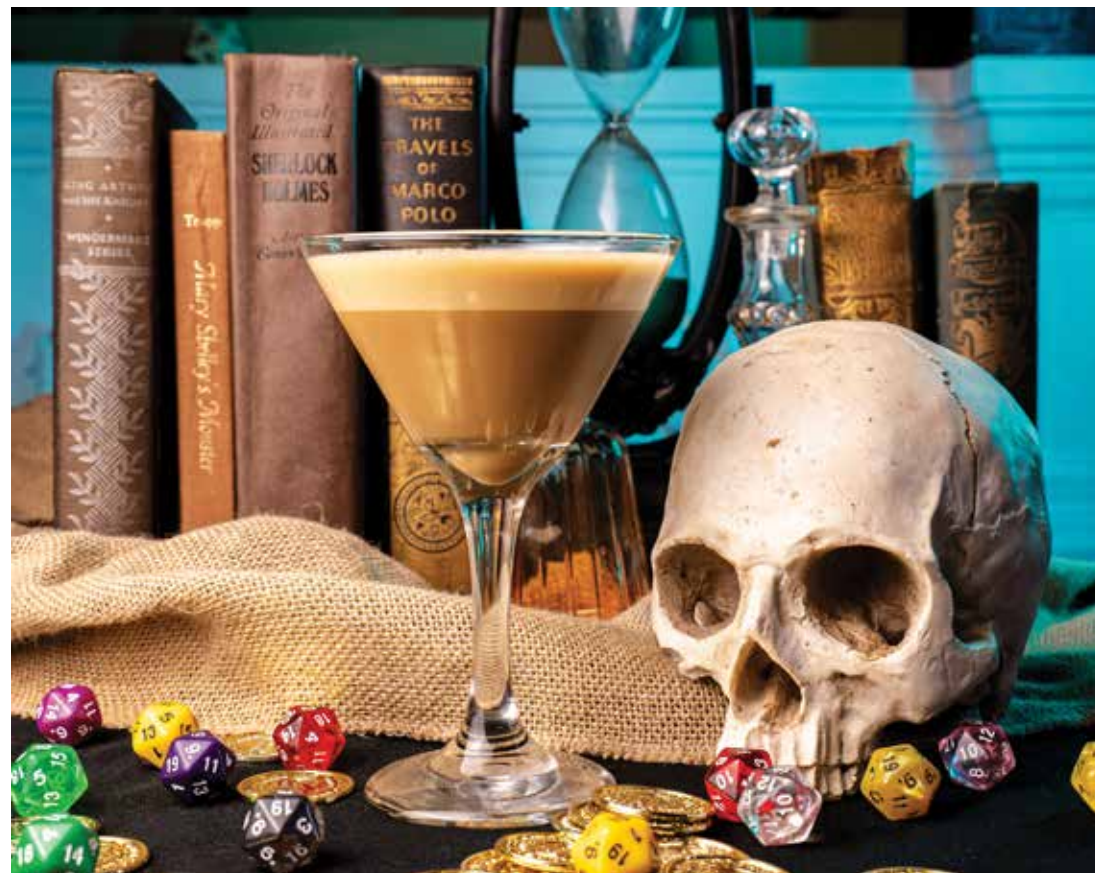
Make it convenient for your guests to order any cocktail they like off of our menu. This is the perfect compromise for hosts who don't want to do an open bar. You can have control over how many tickets guests receive and are charged by consumption.

\$10 per ticket

SPARKLING WINE TOAST

Every special celebration needs some bubbly! Inquire with our events team about our selection of sparkling wine. We'll take care of the rest.

Priced per Bottle



BEVERAGE STATIONS

COFFEE & TEA

Our team can keep a station stocked with coffee & tea throughout your event

Includes:

Milk
Cream
Soy Milk
Sugar
Raw Sugar
Splenda

\$3 Per Person

HOT CHOCOLATE

Our team can keep a station stocked with hot chocolate throughout your event

Includes:

Marshmallows
Whipped Cream

\$5 Per Person

POP & JUICE

Our team can keep a station stocked with juice and pop throughout your event

Includes:

Coke
Diet Coke
Sprite
Ginger Ale
Soda Water
Tonic Water
Orange Juice
Cranberry Juice

\$5 Per Person



EVENT ENHANCEMENTS

ENTERTAINMENT

KARAOKE - \$50

Includes:

Karaoke Program

Microphones

*Only available in Nautilus and Red
Rum

TRIVIA - \$50

Includes:

Trivia program with custom
questions

FOOD ENHANCEMENTS

POPCORN MACHINE - \$150

Includes:

Popcorn

Seasoning

Bags

CANDY BAR - *Custom Pricing*

Includes:

Candy

Containers

Utensils

Bags

BOOK WITH US!

STORM CROW MANOR

580 Church Street

Senior Manager of Events:

Sarah Cannon

E: sarah@stormcrow.com

P: 416-367-2769

